




Hilton
London Docklands Riverside
Travel should take you places™

A contemporary riverside hotel with a self-contained
conference centre, within easy reach of London's
commercial and cultural centres



Welcome

to Hilton London Docklands Riverside

Here, on the banks of the River Thames, delegates can escape the hustle and bustle of the West End, yet still be in easy reach of both the City and Canary Wharf. Designed with the capital's business community in mind, Hilton London Docklands Riverside

presents a choice of 26 dedicated meeting rooms and conference suites, flooded with natural daylight and capable of hosting between 2 and 350 guests. We also provide a courtesy bus to cover the short distance to and from Canada Water station.

From there, the whole of London is within easy reach. The nearest airports to the hotel are London City and Stansted, both of which offer excellent connections for international travellers.



Unbeatable location

With our riverside setting, we're just a few minutes' river taxi ride across from both the City and Canary Wharf, while the ExCel exhibition centre and London City Airport are only 20 minutes away. Ferries travel from Canary Wharf all the way to Embankment Pier – seven days a week and late into the evening Monday to Friday – and connect with the ferry service between the hotel and Canary Wharf. For further details call Thames Clippers on 0870 781 5049 or visit thamesclippers.com

Extensive event space

Host your next meeting or conference in a venue with excellent facilities, an experienced, pro-active events team, flexible rooms and a comprehensive support service.

Dining and unwinding

With a great choice of bedrooms, a health club and a number of exciting dining options, you'll find the leisure facilities at Hilton London Docklands Riverside are just as impressive as our business amenities.

Flexible conferencing



Our dedicated Event Managers ensure your function is a pleasure for everyone involved.

We understand that every event is important, whatever its size or purpose. You can rely on us to deliver our promise to make your function more successful and productive, through an unparalleled range of services and choice of adaptable rooms, whether you choose our self-contained conference centre or the adjacent Nelson House.



Nelson House

- Self-contained venue adjacent to the main hotel
- 11 meeting rooms
- Capacity for 2 to 30 delegates
- Ideal for small corporate gatherings, board meetings or training
- Breakout rooms offer peace and quiet

London Auditorium

- Capable of hosting banquets for up to 300
- Theatre-style seminars for up to 350
- Projection room featuring a variety of presentational aids
- State-of-the-art sound system
- Ideal for large presentations, seminars and exhibitions

Thames Suite

- Flexible, spacious conference suite
- Entire space seats 220 banquet-style
- Sub-divides into four separate rooms
- Private waterside terrace
- Some of the best river views in London

Inspirational meeting space

Our award-winning Hilton Meetings service has been designed to provide everything you need to host successful small- to medium-sized meetings.*

Offering tailored support at every stage of the planning and running of your session, our team promises to help make your meeting experience productive and hassle-free, right from your initial enquiry. With Hilton Meetings you'll always have:

- Time saving technology
- Unrivalled support
- Enhanced food and beverage service
- Online group accommodation tools
- Environmentally-friendly meetings

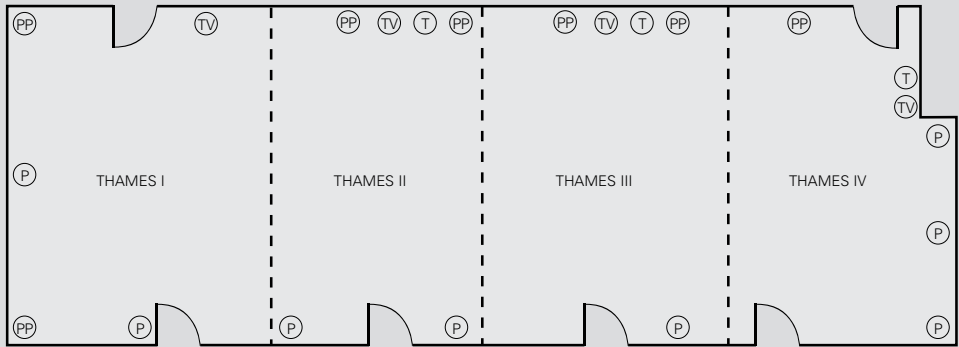
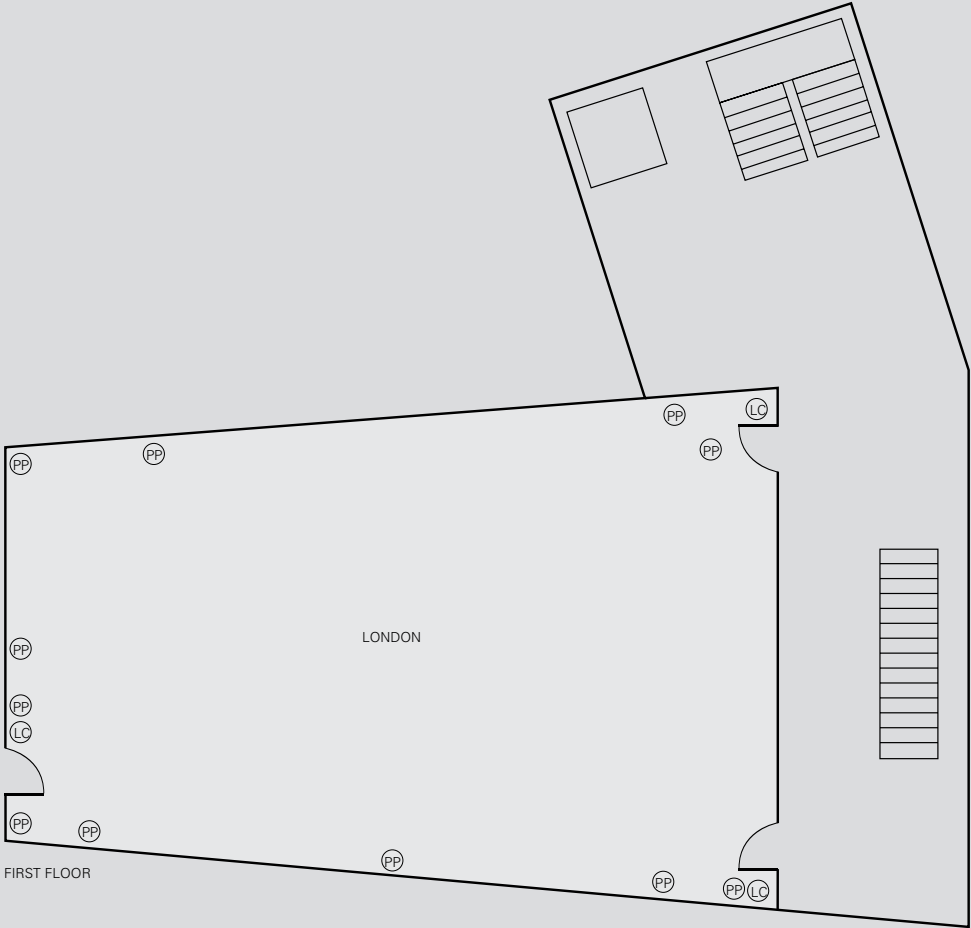


Hilton Meetings Rooms

- Ideal for smaller conferences, training and seminars
- Breakout areas for coffee or workshop tasks
- Comfortable working environment with natural daylight and individually controlled air conditioning
- Audiovisual and presentation equipment provided as standard

* Number One in the BDRC UK Meeting Market Survey 1996-2007

Conference & Events Floor plans



KEY	
Ⓟ	AERIAL POINT
Ⓣ	TELEPHONE
Ⓟ	SINGLE POWER POINT
Ⓢ	DOUBLE POWER POINT
Ⓢ	3 PHASE POWER
Ⓢ	LIGHTING CONTROL

GROUND FLOOR

	Boardroom	U-Shape	Theatre	Classroom	Cabaret	Banquet	Dinner dance	Floor	Dimensions in metres L x W x (H)	Air conditioning	3 phase power	Sound system	Blackout	Natural daylight	Dimmer
London	60	60	350	200	120	300	250	Ground	21.5 x 13.2 (4.3)	•	•	•	•	•	•
Thames I	20	20	50	30	24	-	-	Ground	7.2 x 8.5 (2.2)	•	-	-	-	•	•
Thames II or III	20	20	40	22	12	-	-	Ground	4.9 x 8.5 (2.2)	•	-	-	-	•	•
Thames IV	20	20	50	30	24	-	-	Ground	5.4 x 8.5 (2.2)	•	-	-	-	•	•
Thames (combined)	-	-	180	-	80	220	180	Ground	22.3 x 8.5 (2.2)	•	-	-	-	•	•

Hilton Meetings Floorplans

KEY

AERIAL POINT

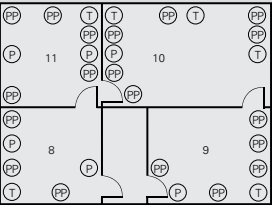
TELEPHONE

SINGLE POWER POINT

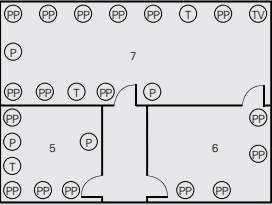
DOUBLE POWER POINT

3 PHASE POWER

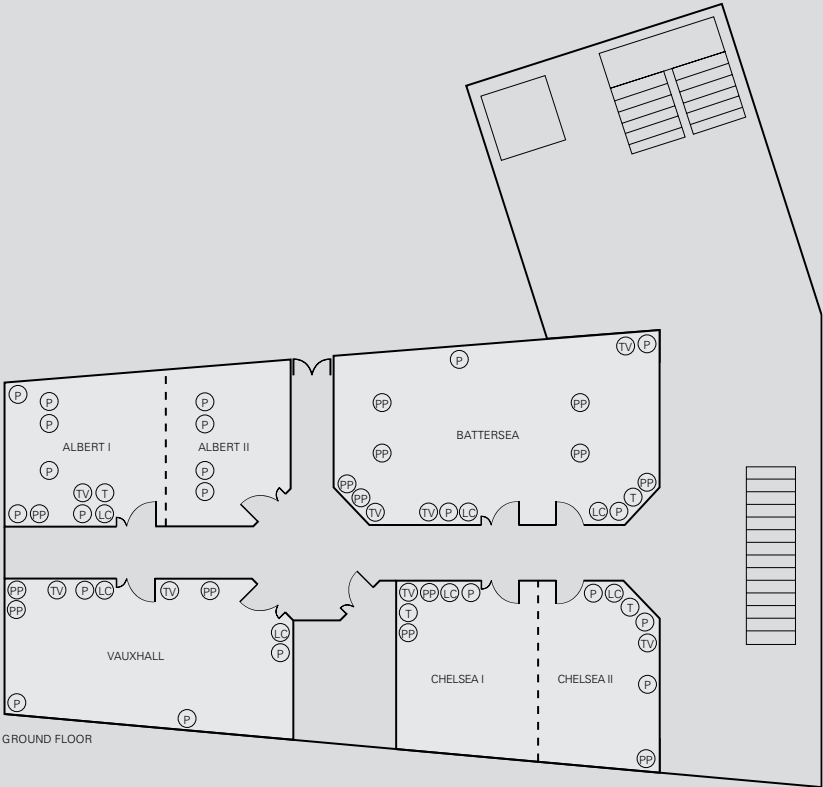
LIGHTING CONTROL



Nelson House Suite – SECOND FLOOR

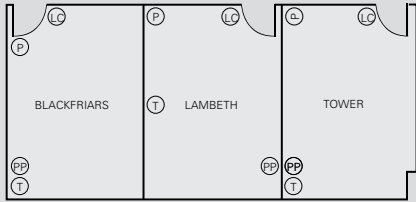


Nelson House Suite – FIRST FLOOR

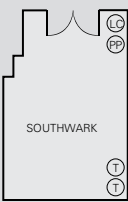


GROUND FLOOR

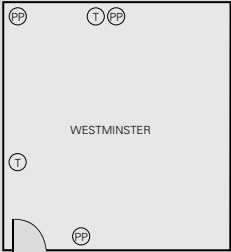
BOARDROOM/SYNDICATE ROOMS



GROUND FLOOR



FIRST FLOOR



FIRST FLOOR

	Boardroom	U-Shape	Theatre	Classroom	Cabaret	Banquet	Dinner dance	Floor	Dimensions in metres L x W x (H)	Air conditioning	3 phase power	Sound system	Blackout	Natural daylight	Dimmer
Nelson House 4, 6 or 9	10	–	–	–	–	–	–	Ground/First/Second	5.4 x 4.5 (2.44)	–	–	–	–	•	•
Nelson House 7	30	26	40	20	24	–	–	Ground	12.2 x 4.65 (2.44)	•	–	–	–	•	•
Nelson House 8	10	–	–	–	–	–	–	Ground	4.5 x 4.5 (2.44)	–	–	–	–	•	•
Nelson House 10	14	14	20	12	18	–	–	Ground	4.5 x 4.65 (2.44)	–	–	–	–	•	•
Nelson House 11	8	–	–	–	–	–	–	Ground	7.5 x 4.65 (2.44)	–	–	–	–	•	•
Battersea	32	32	80	48	36	–	–	Ground	11.4 x 6.6 (2.5)	•	•	–	•	•	•
Chelsea I or II	15	15	25	20	12	–	–	Ground	4.7 x 6.6 (2.5)	•	•	–	•	•	•
Chelsea (combined)	30	30	70	44	30	–	–	Ground	9.6 x 6.6 (2.5)	•	•	–	•	•	•
Vauxhall	26	26	44	32	24	–	–	Ground	10.7 x 5.2 (2.5)	•	•	–	•	•	•
Albert I	10	10	20	12	12	–	–	Ground	4.5 x 4.7 (2.5)	•	•	–	•	•	•
Albert II	12	12	25	14	12	–	–	Ground	6.0 x 4.7 (2.5)	•	•	–	•	•	•
Albert (combined)	22	22	44	32	30	–	–	Ground	10.5 x 4.7 (2.5)	•	•	–	•	•	•
Westminster	24	24	60	36	30	–	–	First floor	7.9 x 7.2 (2.3)	•	–	–	–	•	•
Southwark	14	–	25	–	12	–	–	First floor	5.9 x 3.5 (2.4)	•	–	–	–	•	•
Tower	14	–	25	–	12	–	–	Ground	6.2 x 4.4 (2.3)	•	–	–	–	•	–
Lambeth	14	–	25	–	12	–	–	Ground	6.2 x 4.0 (2.1)	•	–	–	–	•	•
Blackfriars	14	–	25	–	12	–	–	Ground	6.2 x 3.9 (2.1)	•	–	–	–	•	•
Nelson House 2	8	–	–	–	–	–	–	Ground	4.5 x 4.65 (2.44)	•	–	–	–	•	•
Nelson House 3 or 5	8	–	–	–	–	–	–	Ground/First	4.5 x 4.5 (2.44)	–	–	–	–	•	•

Relax, recharge and unwind

Indulge in gentle swims, soothing massages, invigorating workouts and a great night's sleep.

After a hard day's work, you deserve to unwind in style and comfort. Hilton London Docklands Riverside offers a convenient retreat where you can refresh yourself. Providing a rare mix of contemporary business facilities, comfortable accommodation and leisure amenities, the hotel is large enough to provide all the mod-cons you expect, with a warm, welcoming ambience you might not.



Well-appointed bedrooms

- 365 air-conditioned bedrooms including 110 deluxe rooms and four suites
- Spacious and well-lit work desks
- High-speed Internet access
- Wonderful views over the river or London's skyline
- Some rooms have a private balcony or original Columbia Wharf architecture

Stylish apartments

- Four apartments – perfect for guests on an extended stay
- Bright, light and spacious with aerial views over London
- Separate lounges with DVD player
- Generous-sized bathrooms and self-catering kitchens

LivingWell Health Club

- Inspirational setting and quiet location
- Spread over three floors
- Work out in the fitness room and aerobic studio
- Relax in the indoor swimming pool and solarium
- Indulge in beauty and relaxation therapies

Meet, greet and celebrate in style

Entertain clients and friends with fine cuisine served in a stunning, waterside setting.

Dining at Hilton London Docklands Riverside is an event in itself. Whether you want an informal business lunch overlooking the river, a relaxed but intimate evening meal, a buffet of extravagant choice for breakfast or a spectacular, black tie banquet, we offer a range of stylish venues for you to choose from.



Banqueting & Private dining

- Stunning riverside setting
- Menus tailored to meet your needs
- Event planners take the hassle out of planning your banquet
- Terrace Restaurant or the intimate oak-beamed library available for private dining
- Flexible menu options and themed evenings available

Terrace Restaurant & Lounge Bar

- Alfresco dining terrace overlooking the river
- The famous Hilton Breakfast every morning
- Light, healthy dishes for lunch
- Selection of popular, wholesome classics for dinner
- Informal atmosphere and buffet-style service

Team building

- Within the hotel's Terrace Restaurant a purpose-built "Thyme to Cook Challenge" area is available, where teams can compete in a cooking competition with our Chefs
- Our events team can also organise Team Building activities including themed events, river charters and drinks receptions at various London landmarks

Getting around

Travelling to the Hotel

By road

From Tower Hill From the south side of Tower Bridge, turn left into Tooley Street continuing into Jamaica Road. At the roundabout (southern entrance to the Rotherhithe Tunnel) turn left into Brunel Road continuing onto Salter Road. Turn left at the YHA and immediate right into Rotherhithe Street.

From Canary Wharf/Limehouse Link Exit the Limehouse Link Tunnel in the right-hand lane and turn right at the lights. Proceed the short distance up Butcher Row and turn right at the lights to A13 Commercial Road. Stay in the right-hand lane under the railway bridge and turn right at the lights into the narrow approach road to Rotherhithe Tunnel. Exit the tunnel taking the third exit to Brunel Road. Turn left at the YHA then right onto Rotherhithe Street.

By river

Daily river taxi service connecting Canary Wharf to various London Piers, including The O₂

By rail

A courtesy bus service travels to and from the hotel and Canada Water tube station seven days a week.

Travelling to ExCeL

By road

From Tower Bridge, take East Smithfield Road toward City Airport. Proceed through the Limehouse Link Tunnel following signs for the City Airport, proceed across the dock on the Connaught Crossing. (The ExCeL site will be visible on your left.) At the Connaught Roundabout turn right. At the Royal Albert Roundabout take the last exit that leads to the underpass to ExCeL.

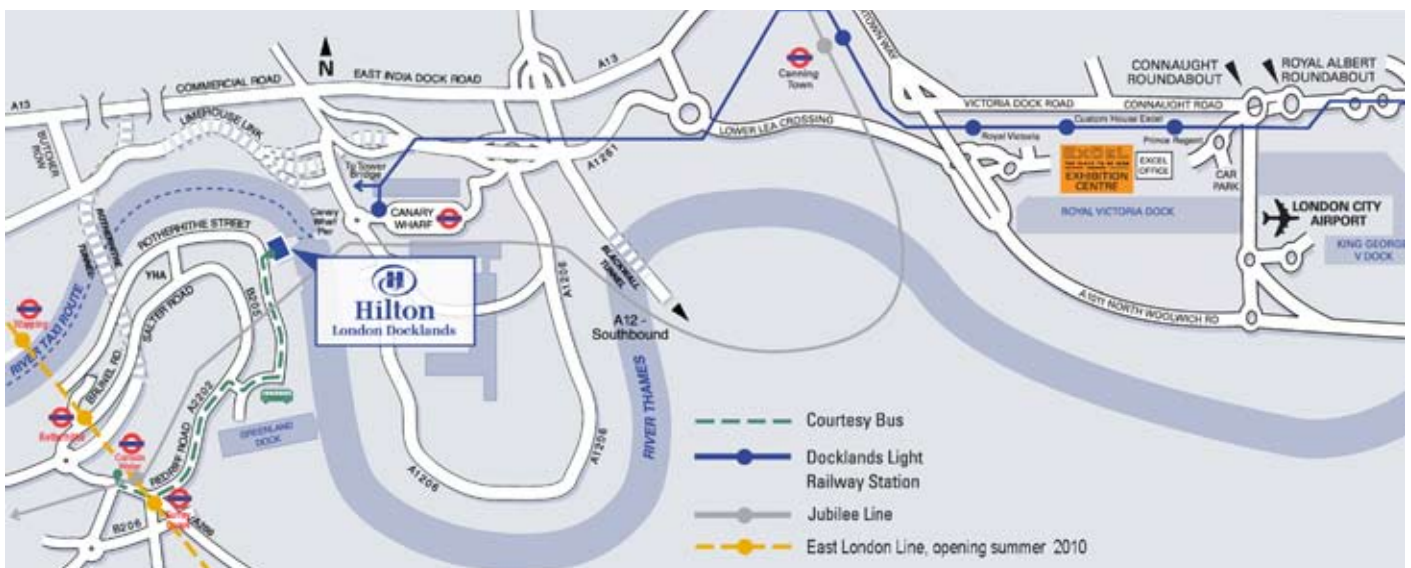
By river

Take the hotel's own water taxi service from hotel pier to Canary Wharf Pier, then catch the Docklands Light Railway and exit at Custom House ExCeL.

By rail

From the hotel take the courtesy bus to Canada Water. Take the Jubilee Line (going east) to Canning Town. At Canning Town connect to the Docklands Light Railway and exit at Custom House ExCeL.

Our Guest Services Desk can help with all your transport needs, including chauffeur cars, coach hire and charter boat services to ExCeL.

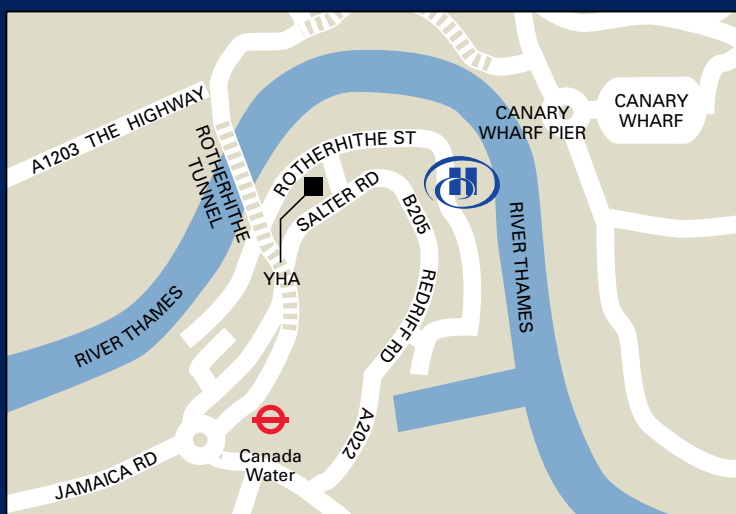




Hilton

London Docklands Riverside

Travel should take you places™



265 Rotherhithe Street, London SE16 5HW

Telephone: +44 (0) 20 7231 1001 Fax: +44 (0) 20 7231 0599

Email: sales.docklands@hilton.com

hilton.co.uk/docklands