

The official promotional organisation for London

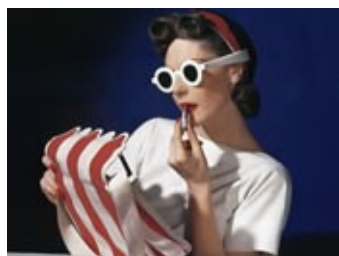
To view this email in a web browser, [go here](#)**MAYOR OF LONDON****Press Briefing | May 2014**

What's New August & September 2014

London is set to welcome a brand new selection of blockbuster exhibitions, top entertainment and a whole host of fun-packed activities over the coming months.

For more on what's new in London go to visitlondon.com

You can also follow the London & Partners Media & PR team for more London news at [@London_PR](#)



Photographer of Style

This September, the V&A will present the definitive retrospective exhibition of the work of master photographer Horst P. Horst. [Read more...](#)



Totally Thames 2014

Totally Thames festival will celebrate the River Thames with a 30-day programme of river-inspired events for all ages. [Read more...](#)



Film4 Summer Screen

Celebrating ten years of cinema under the stars, Film4 Summer Screen at Somerset House is back for 14 nights this August. [Read more...](#)

Attractions

Forgotten Fighters: the First World War at Sea

National Maritime Museum, opens August 2014

As part of the National Maritime Museum's commemoration of World War One this new gallery explores the naval and maritime dimensions of that conflict. The horrors of the Western Front have long dominated our understanding of those years, and yet the war at sea was fought on an epic scale and with terrible human loss. Forgotten Fighters foregrounds the personal stories of those who participated through a wide range of objects including weaponry, photographs, medals and ship models. The exhibition explores everything from the heroism of merchant mariners to the shattering realities of naval battle, and from the Falkland Islands and the Mediterranean to the Atlantic and the North Sea. For more information contact 020 8312 6790 / press@rmg.co.uk

Family fun at Chelsea Physic Garden

Throughout August 2014

London's oldest outdoor classroom has a variety of family activity days this August to entertain and engage your children during the summer holidays. Highlights include a range of interactive sessions such as garden photography, the animal world, forensic biology, an art safari, craft workshops with chocolate, herbal lotions & potions and much more. For more information contact Lynn Scrivener on 0207 349 6472 / lscrivener@chelseaphysicgarden.co.uk

New galleries at the Wellcome Collection

Autumn 2014

Wellcome Collection has started work on a £17.5m redevelopment, with new galleries and spaces due to open in autumn 2014. The building will remain open throughout the works with an exciting and experimental programme of exhibitions and events held inside and out. For more information contact Tim Morley on 020 7611 8612 /

t.morley@wellcome.ac.uk

Information Age

Science Museum, opening September 2014

The Science Museum's new £15.6m permanent gallery will use sophisticated interactive displays and engaging participative experiences to reveal personal stories about how our lives have been transformed by communication innovations over the last 200 years. The gallery will occupy the largest exhibition space in the Museum, and will feature hundreds of unique objects from the Science Museum's world-class collections, many of which have never been seen before. For more information contact the press team on 020 7942 4353 / pressoffice@sciencemuseum.org.uk

KidZania

Westfield London, launching late 2014

KidZania, the international and award-winning interactive experience for children, and world's fastest growing edutainment brand, is set to open its first site in the UK and northern Europe at Westfield London. KidZania takes interactive entertainment and learning to a new level by combining role-playing with real life. At Westfield London, it will provide children and their parents with a safe, unique, and realistic educational environment that allows children between the ages of four and 14 to role-play by imitating grown-up jobs. The indoor venue is a city built to scale for children - at two-thirds of their actual size all facilities are designed for youngsters. Parents will have the option to relax in KidZania lounge facilities or leave their children in a secure environment for up to four hours while they shop. For more information contact Will Scawn on 020 7636 7366 / wscawn@camarquepr.com

Exhibitions

Horst: Photographer of Style

V&A, 6 September 2014 - 4 January 2015

This autumn, the V&A will present the definitive retrospective exhibition of the work of master photographer Horst P. Horst (1906-1999) – one of the leading photographers of the 20th century. Horst: Photographer of Style will display 250 photographs, alongside haute couture garments, magazines, film footage and ephemera. The exhibition explores Horst's collaborations and friendships with leading couturiers such as Coco Chanel and Elsa Schiaparelli in Paris; stars including Marlene Dietrich and Noël Coward; and artists and designers such as Salvador Dalí and Jean-Michel Frank. For more information, contact Julie Chan on 020 7942 2701 / j.chan@vam.ac.uk

Designers in Residence

Design Museum, 10 September - 1 February 2015

The Design Museum's annual Designers in Residence programme provides a platform to celebrate emerging designers at an early stage in their career. Now in its seventh year, Designers in Residence is a core part of the exhibition calendar, demonstrating the Design Museum's commitment to support and encourage new design talent. Recent alumni have included Giles Miller, Asif Khan, Bethan Laura Wood and Simon Hasan. The programme offers the designers the opportunity to interact and engage with the design and business community, using this platform to test-bed ideas, innovations and future projects. For more information contact the press team on 020 7940 8787 /

media@designmuseum.org

Ming: 50 years that changed China

British Museum, 18 September 2014 - 5 January 2015

Extraordinarily beautiful and rare loans tell the story of a critical period in Chinese history (1400 – 1450) when China became a global superpower. The exhibition will include rare loans of some of the finest objects ever made in China, shedding light on this important part of world history that is little known in Europe. Loans will be coming from 10 Chinese institutions and 21 international lenders. For more information contact the Press Office on 020 7323 8583 /

communications@britishmuseum.org

Constable: The Making of a Master

V&A, 20 September 2014 - 11 January 2015

This exhibition will reveal the hidden stories of how Constable created some of his most loved and well-known paintings. It will present Constable's work for the first time alongside the old masters of classical landscape such as Ruisdael and Claude whose compositional ideas and formal values he revered and studied in great depth. The exhibition will also examine Constable's collection of over 5000 etchings, a vital resource for his own image making, as well as the mezzotints of his paintings made in the last decade of his life to secure his lasting legacy. For more information contact V&A Press Office on 0207 942 2502 / press.office@vam.ac.uk

Events

Prudential RideLondon

Across London, 9 - 10 August 2014

The mass-participation cycling event is back in London in 2014 after a brilliantly successful first year. The two-day cycling festival will allow families and amateur riders to take part, as well as attracting the world's best elite cyclists. There will be fun rides for cyclists of all ages and abilities who want to enjoy the fun of cycling in a traffic-free environment. The route will pass many of Central London's famous landmarks, including the Houses of Parliament and Buckingham Palace. The 100 mile race will appeal to the world's top elite cyclists and amateur cyclists alike, starting at Queen Elizabeth Olympic Park, taking in roads in London and Surrey and finishing in Central London. For more information contact Penny Dain on pennyd@ridelondon.co.uk

Notting Hill Carnival

25 - 26 August 2014

The award winning and internationally renowned annual London Carnival rooted in the Caribbean tradition includes a series of linked events from July to August that culminate in the major event on the streets of Notting Hill on August Bank Holiday. For more information contact NK Media on 020 7096 8888 / info@nkmedia.co.uk

Open Streets

Bankside, 30 August 2014

For the first time in London this global movement closes Southwark Street to traffic in Bankside to celebrate the area as an open community space. For more contact Lisa Henshaw on 020 7403 4411 / lisa@fourthday.co.uk

Totally Thames 2014

Across London, 1 - 30 September 2014

Throughout September, Totally Thames festival will celebrate the River Thames with a 30-day programme of river-inspired events. These will include arts, music and community festivals, colourful regattas, river rallies and races, foreshore archaeology, exploration, environmental and educational activities, not to mention plenty of opportunities to walk and eat beside the river. Totally Thames events to look forward to this year include: The Mayor's Thames Festival throughout September, Royal Greenwich Tall Ships Festival (5-9), Handel's Fireworks Music and Illuminations at Hampton Court Palace (14 Sept) and many more. For more information contact Una Devine on 020 7928 8998 / una@unadevine.com

London Design Festival 2014

Across London, 3 - 21 September 2014

See the latest in design trends during the 12th London Design Festival at venues across the capital. Leading the way in innovation, this festival celebrates the best creative talents with over 300 events and exhibitions covering a broad spectrum of design innovation. Events can be found everywhere from the Victoria and Albert Museum to small local studios, with a select few taking place at some iconic London landmarks. Always highly original, design enthusiasts should brace themselves for some thought-provoking works in the most unexpected of places. For more information contact Camron PR on 020 7420 1700 / ldfteam@camronpr.com

Falmouth-Royal Greenwich Tall Ships Regatta 2014

Queen's Wharf, 5 - 9 September 2014

The annual event, which is led by STI, the international voice of Sail Training, attracts hundreds of thousands of visitors from across the globe. It will see around fifty of the world's most spectacular Tall Ships berthed and open to the public in the historic Queen's Wharf in Falmouth Docks. From there the race is on, with the Tall Ships setting sail and navigating a series of waypoints to a finish line off the Isle of Wight. The final leg of the journey sees them cruise into Royal Greenwich, where they will be stationed between 5-9 September, marking the first time in 25 years that London has played host to a major International Tall Ships Regatta. For more information contact Stephanie Basten on 020 8921 8458 / stephanie.basten@royalgreenwich.gov.uk

Merge Festival

Bankside, 18 September - 19 October 2014

The annual arts, music and performance festival draws upon the contemporary culture and rich heritage of London's Bankside. A programme of exhibitions, interactive installations and live performances will take place in unusual venues throughout the area. For more contact Lisa Henshaw on 020 7403 4411 / lisa@fourthday.co.uk

Vodafone London Fashion Weekend

Somerset House, 18 - 21 September 2014

Vodafone London Fashion Weekend follows London Fashion Week, which is one of the "big four" fashion trade shows in the world. London Fashion Weekend is a fashionista extravaganza, letting everyone in on this fabulous world. Somerset House is transformed into an exclusive fashion experience, brimming with designer catwalk shows, pop-up shops, hair and beauty, and educational panels. Fashion lovers can get their seasonal wardrobe fix from designer brands including Issa London, French Sole and Linda Farrow. For more information contact Chloe Fosbrook on 0207 886 3006 / chloe@single-market.co.uk

Open House London

Across London, 20 - 21 September 2014

Celebrate London's architectural wonders as Open House London throws open the doors to hundreds of buildings in and around the capital. Last year, Open House London offered a chance to visit more than 700 buildings, including 30 St Mary Axe (known by Londoners as The Gherkin), Battersea Power Station, 10 Downing Street and 100 private homes. There were also architecture-themed walks, cycle rides and debates. For more information contact Matthew Turtle on 0207 383 2131 / press@open-city.org.uk

Pearly Kings and Queens Harvest Festival 2014

Guildhall, 28 September 2014

Celebrate the harvest with the Pearly Kings and Queens, who will be wearing their traditional pearl-button suits as they parade from Guildhall to St Mary-le-Bow church. Wearing dark suits that are covered in hundreds of bright pearl buttons, the Pearly Kings and Queens of London are a charming and unforgettable sight. At this festival, which celebrates the bounty of the autumn harvest, they will be staging traditional entertainment at Guildhall before parading to St Mary-le-Bow church for a service of thanksgiving. For more information visit pearlysociety.co.uk

London Literature Festival

Southbank Centre, 30 September - 3 October 2014

London Literature Festival, now in its eighth year, will take place in the autumn. It will feature the world's best writers, poets, performers and thinkers, and celebrate some of the best new writing - including reading from both the Forward Prizes for Poetry and the Man Booker Prize. For more information contact Rachel Dakin on 020 7921 0604 / rachel.dakin@southbankcentre.co.uk

Theatre, Music & Film

Kids Week

Various London Theatres, throughout August 2014

The annual London theatre initiative Kids Week returns once again for the whole month of August. Now in its 17th year and run by the Society of London Theatre (SOLT), Kids Week encourages young people to experience the magic of live theatre. During Kids Week one child aged 16 or under can go free to more than 30 participating shows when

accompanied by an adult paying full price, and up to two extra children can go for half price. Children can also take part in a fantastic range of free activities and events on stage and backstage at many of the West End's iconic venues, often with the cast and crew of the resident shows. For more information contact Anthony McNeill on Society of London Theatre 020 7557 6727 / anthony@soltukt.co.uk

To Kill a Mockingbird

Regent's Park Open Air Theatre, 28 August - 13 September 2014

The 2013 production of To Kill a Mockingbird will return to the venue in 2014. Concluding next year's season, the production will then embark on a UK tour. For more information contact Chloe Pritchard-Gordon on 020 7831 7657 / chloe@thecornershoppr.com

Film4 Summer Screen at Somerset House

7 – 20 August 2014

Celebrating ten years of cinema under the stars, Film4 Summer Screen at Somerset House is back. For 14 nights, classic, cult, contemporary and never-seen-before films will feature on London's largest screen with full surround sound in the spectacular neoclassical setting of Somerset House. As the sun sets, live DJs will spin a soundtrack inspired by the upcoming film and cinema-goers can chill out in the courtyard with picnics and drinks. Selected screenings will also be specially introduced by the film's stars and directors. With an array of anniversary events from industry insider talks to a film poster exhibition, Film4 Summer Screen at Somerset House is one of the UK's favourite summer cinema experiences. For more information contact Stephanie Lilley on 020 7845 4638 / press@somersetthouse.org.uk

Northern Light Season

Sadler's Wells, autumn 2014

Dance enthusiasts can enjoy a celebration of Nordic dance culture this Autumn with a season of six works across the main stage of Sadler's Wells and Lilian Baylis Studio, as well as off-site. Northern Light showcases dance created by established and emerging contemporary artists from Sweden, Finland, Iceland, Denmark and Norway. Highlights include The Artificial Nature Project (18 and 19 September) with dance artist Mette Ingvarsen in a new partnership with the Platform Theatre at Central St Martins, and also the Royal Swedish Ballet's new adaptation of Juliet & Romeo (24 - 27 September). For more information contact Caroline Ansdell on 020 7863 8125 / caroline.ansdell@sadlerswells.com

A Time and Place: Musical Meditations on the First World War

Barbican Hall, 18 September 2014

This new folk collaboration is inspired by the lives and stories of the generation that witnessed the First World War. Featuring Becky Unthank, singer-songwriter Sam Lee, Adrian McNally and other artists to be announced, the event also includes video design by Matt Watkins. A Time and Place is part of the Imperial War Museum's First World War Centenary Commemorations. For more information contact Sabine Kindel on 020 7382 7090 / sabine.kindel@barbican.org.uk

About London & Partners

London & Partners is the official promotional organisation for London attracting and delivering value to businesses, students and visitors. London & Partners is a not-for-profit public private partnership, funded by the Mayor of London and our network of commercial partners. Our remit is to drive leisure and business visitors as well as bidding to secure major events in London, we can unlock the city for overseas businesses who want to set up or expand in London and we promote the capital's world class universities to international students.

For more information visit londonandpartners.com

Media Enquiries:

London & Partners Media & PR Team

Tel: +44 (0)20 7234 5710

Switch: +44 (0)20 7234 5800

Email: press@londonandpartners.com

Twitter: [@London_PR](https://twitter.com/London_PR)



[Privacy](#)

[Terms & Conditions](#)

[Accessibility](#)

[Copyright](#)

London & Partners is registered in England under no. 7493460. Registered Office: London & Partners, 2 More London Riverside, London, SE1 2RR.

You are receiving this email because you have subscribed to londonandpartners.com using jbyford@londonandpartners.com. If you no longer want to receive emails from us, please [unsubscribe here](#)