

FILM IS GREAT

BRITAIN



A guide to visiting
Film and TV
locations in Britain

© P & Co Ltd/SC 2015



RELIVE THE MAGIC THROUGH THE EYES OF THE FILMMAKERS WHO BROUGHT THE HARRY POTTER™ FILM SERIES TO LIFE!

WB
WARNER BROS.
STUDIO TOUR
LONDON

THE MAKING OF
Harry Potter



WBSTUDIOTOUR.CO.UK

TICKETS MUST BE PURCHASED IN ADVANCE

TM & © 2015 Warner Bros. Entertainment Inc. Harry Potter Publishing Rights © JKR.

WELCOME

BFC CHAIRMAN IAIN SMITH



“Audiences love to visit the places they see on screen”

In *Local Hero*, one of the first features I helped produce, an American oil magnate plans to build a refinery in a small Scottish village, but changes his mind when he visits and falls in love with the place. It's not hard to see a parallel with Hollywood. In recent years US producers have similarly fallen for this small but beautiful nation of ours, with its iconic locations and rich seam of on- and off-screen talent.

More and more blockbusters are being filmed here, with the British Film Commission's help, from *Cinderella* to *Mission: Impossible – Rogue Nation* and *Star Wars: Episode VII – The Force Awakens*. It's true of TV series, too. Last year I produced the *Live*

Another Day season of the Jack Bauer thriller *24*, which proved to me yet again what a thrilling location London can be.

All this makes this magazine very timely, as well as an invaluable resource. *Local Hero* made me aware of something very early on, after visitors from all over the world travelled to see its beautiful Scottish village: that audiences love to visit the places they see on screen. Whatever your current favourite UK-set film or TV series is, we hope you will find its inspirational location in the pages that follow.

Iain Smith is Chairman of the British Film Commission, and has produced more than 20 feature films including Mad Max: Fury Road.

PARTNERS



Original Concept: Dominic Wong – Warner Bros. MVP Commercial Partnerships Director Donna Price, Editor & Writer Dominic Wells, Art Director Tim Benton, Designer Tara Swart, Production Melanie Needham, Jennifer Bourne, David Weeks, Richard Darani, Sales Director Tourism Rob Way

Published by Morris Visitor Publications, Samuel House, 6 St Alban's St, London SW1Y 4SQ. Tel: 020 7242 5222

Printed by Acorn Web Offset Ltd



Eddie Redmayne in
The Theory of Everything



BRIT HITS

From bright young actors to historic stately homes, discover why the film spotlight is now firmly on the UK.

In 1981, when Colin Welland won the Best Screenplay Oscar for *Chariots of Fire*, he quoted Paul Revere: “The British are coming!” he crowed, holding his golden trophy aloft. He was a little ahead of his time. For the next 25 years, you’d only find a Brit in a blockbuster when they needed a villain who could make “I’m going to cut your heart out with a spoon” sound like Shakespeare!

In the last decade, however, we have developed an unprecedented talent pool of 20-odd young British stars who can “open” a big film. The movement started with Ewan McGregor, Jude Law and Kate Winslet, picked up pace with James McAvoy,

Christian Bale and Keira Knightley, and then came the explosion: Tom Hardy, Idris Elba, Benedict Cumberbatch, Emily Blunt, Rosamund Pike and Carey Mulligan, to name but a few.

And still they come: Eddie Redmayne in *The Theory of Everything* and Lily James in *Cinderella* show the promise in the younger generation.

The same is true in TV, from Hugh Laurie in *House* to Damian Lewis in *Homeland* and Hayley Atwell in *Agent Carter*.

Behind the camera, too, UK know-how is enabling more and more major movies. In the last two years alone Britons have had great success at the Oscars,



Benedict Cumberbatch in
The Imitation Game

winning Best Picture and Best Actor among other awards. Our visual-effects companies power countless blockbusters. And whereas talented film-makers once had to get on a plane to La La Land to seek fame and fortune, now, like Guy Ritchie, they can buy a pub in London and still make blockbusters such as *Sherlock Holmes* and the upcoming *The Man From U.N.C.L.E.* and his forthcoming King Arthur epic.

“I can’t believe it,” Guy Ritchie tells us of shooting

at Warner Bros. Studios Leavesden. “So Hollywood came to England and Hollywood’s here, for me it’s fantastic. I love it.”

WARM WELCOME

Hollywood has long appreciated the beauty and history of the UK. As you will discover, the UK is uniquely varied in its buildings and landscapes, from stately homes to wild

*“So Hollywood came to England,
it’s here. I love it” - Guy Ritchie*

moorland.

But it’s only in the last few years that the UK has gone all-out to welcome international productions. Hundreds of millions have been spent equipping both Pinewood and Warner Bros. Studios Leavesden (see p. 14) for the biggest blockbusters. And there are now official bodies for London, England, Wales, Scotland and Northern Ireland specifically tasked with assisting productions.

“There are three things we do,” explains Kaye Elliott, Head of Production Services at Creative England. “We promote the regions of England as a great place to film. We get involved in production right from the earliest stages to wrap, finding locations, organising permissions and supplying local crews. And we work on the ground to improve the infrastructure and environment for filming in the regions via our ‘Film Friendly Partnership’ scheme with 290 different local authorities and services.”

“There are stunts that

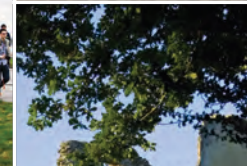
WHERE HISTORY MEETS THE BIG SCREEN



DOVER CASTLE AS SEEN IN DISNEY'S
FILM 'INTO THE WOODS'



STONEHENGE
AS FEATURED IN BBC'S 'DR WHO'



KENWOOD
'NOTTING HILL'



GOODRICH CASTLE
AS SEEN IN MERLIN



OLD WARDOUR AS SEEN IN WARNER
BRO'S 'ROBIN HOOD: PRINCE OF THIEVES'



DOVER CASTLE IN
BBC'S 'WOLF HALL'

'Into the Woods' 2014 ©The Walt Disney Company / 'Wolf Hall' 2015 ©BBC Worldwide



ENGLISH
HERITAGE

To find out more visit:
www.english-heritage.org.uk/visit

Step into England's story

The English Heritage Trust is a charity, no. 1140351, and a company, no. 07447221, registered in England.

“Visits to Westminster Abbey rose 28% after The Da Vinci Code”

would have been impossible 10 years ago,” adds Adrian Wootton, who heads up Film London. “Like Tom Cruise landing a helicopter in Trafalgar Square (see p. 18) or a *Fast & Furious* car chase.”

London’s a familiar sight now in Hollywood blockbusters, even if it does seem to get demolished a lot! Summer’s just not summer without Tom Cruise or a Marvel superhero racing through the capital’s streets.

Overseas investment in the UK by film productions topped £1.2bn in 2014, and it is estimated that the overall contribution to the economy of UK screen content is £6 billion a year, when you factor in spin-off benefits such as tourism.

“There’s a real expansion of the creative industries that just wasn’t there 10 or 15 years ago,” says Adrian, who is also Chief Executive of the British Film Commission, which champions the film

industry as a whole both to UK decision-makers and to international producers. “It’s not just a London phenomenon: London acts as a gateway to the rest of the UK. Yorkshire alone has 20 different film and TV productions at the moment.”

HOT TICKETS

And if you screen it, they will come. For visitors, films and TV series act like a trailer for the UK’s stately homes and landscapes. If you like what you see on screen, you’ll love it in real life.

“Film and TV is becoming a bigger part of the tourist landscape,” says Adrian. “People want their pictures taken in front of the sets. The beauty of Devon’s coastline and beaches in *Broadchurch* has driven tourists there, and we will definitely see an increase to Cornwall after *Poldark*. Westminster Abbey didn’t want *The Da Vinci Code* to film there, but still had a 28% increase in visitors the following year!”

In this magazine, you’ll discover all these places and more. So what are you waiting for? The UK may have become the hottest screen star around, but it’s laying out the red carpet for you. 



Carey Mulligan in *Far From The Madding Crowd*

BBC FILMS, FOX SEARCHLIGHT

London Film Museum & EON Productions present

EXHIBITION EXTENDED
DUE TO POPULAR DEMAND

AN EXCITING FAMILY EXHIBITION

LONDON FILM MUSEUM
BOND IN MOTION
THE LARGEST OFFICIAL COLLECTION OF ORIGINAL JAMES BOND VEHICLES

007™



Bond in Motion has over 100 individual original items on display from all 23 James Bond Films. The largest display of it’s kind ever staged in London.

'DOUBLE O HEAVEN'
Time Out



The exhibition includes concept drawings, storyboards, scripts, model miniatures and full size vehicles from cars, boats, bikes and gyrocopters.

'LICENCE TO THRILL'
Metro

 LONDONFILMMUSEUM.COM

45 WELLINGTON ST.  LONDON WC2E 7BN

 JAMES BOND 007

Tickets are available at the venue box office daily. To avoid the queues please purchase your tickets in advance. *Please check website for special event announcements as these may result in the Museum being closed.

007™ and related James Bond Trademarks © 1962-2015 Danjaq, LLC and United Artists Corporation. 007™ and related James Bond Trademarks are trademarks of Danjaq, LLC. 2015 © EON Productions Limited and Danjaq, LLC. All rights reserved.

ticketmaster®



THE MAGIC OF MOVIES

Uncover chambers of secrets and meet the real wizards of British film on Warner Bros. Studio Tour London – The Making of *Harry Potter*

Dumbledore's office

There is a wonderful moment at the start of the Warner Bros. Studio Tour

London – The Making of *Harry Potter*, when you realise you are in for a special kind of magic. We are sitting in a movie theatre, watching Emma Watson, Daniel Radcliffe and Rupert Grint, better known to the fans here as Hermione, Harry and Ron, talk about making the eight films that took up a decade of their young lives. On screen, they are standing in front of vast wooden doors flanked by 20 statues of armoured knights.

“Several thousand cast and crew worked on each film,” says Emma. “The crew were the real wizards of Hogwarts.”

And then... well, let's not spoil exactly what happens next, but then you're in the real Great Hall, with lit braziers hanging from the mouths of Hogwarts house mascots by a giant fireplace, and the authentic costumes of every main character.

“Why put all this at the beginning?” you think. “Why put their best stuff first? They can never top this.”

Ah, but they can. And they do!

GOLDEN SNITCH

The entire tour takes an average of three hours, although you can ‘Potter’ about all day if you choose!



Actor Mark Williams climbs aboard the Hogwarts Express

I thought I'd see the main sights and be out in two; instead I emerged blinking, head crammed with wonders, after four.

“It's sooo pretty! Oh my gosh!” enthuses a twenty-something American girl, looking at the Golden

Snitch encased within a cabinet of curiosities, each metal feather a work of art. “Everything is sooo beootiful!”

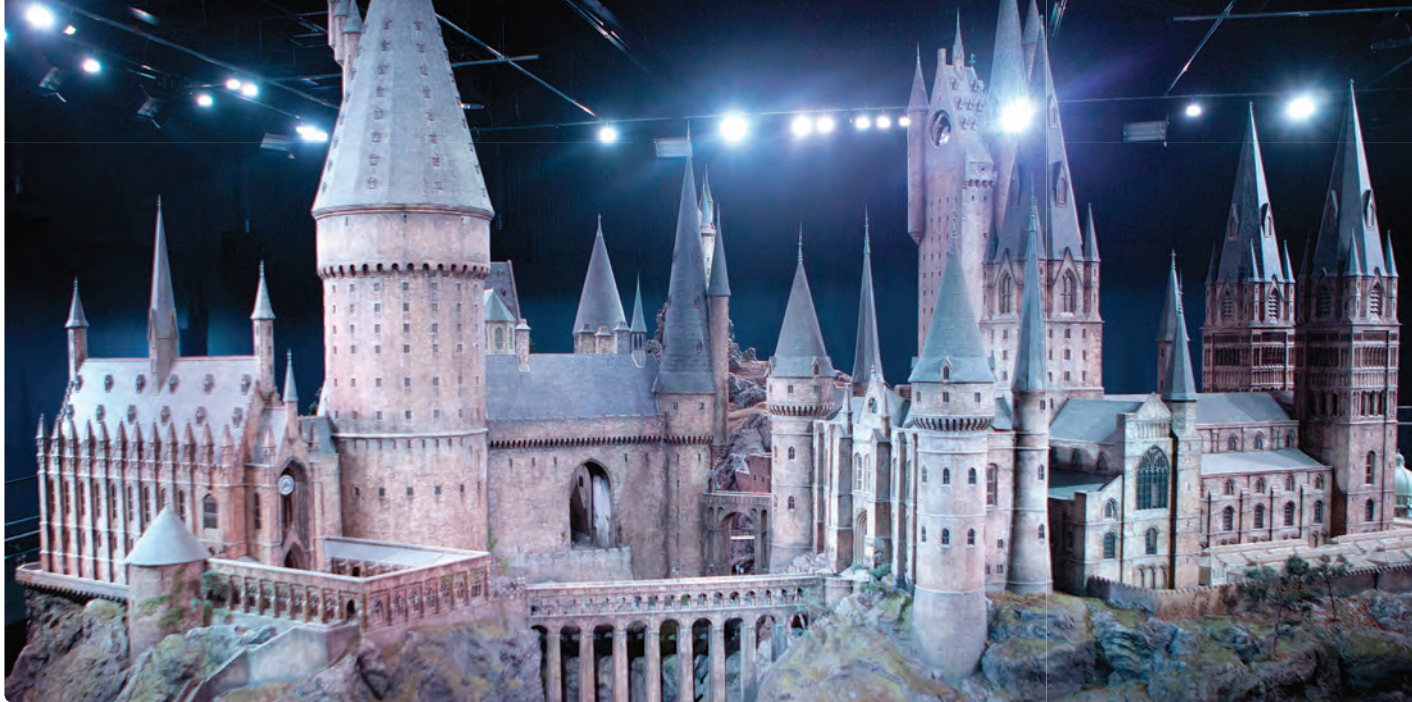
Up close, you can see the exquisite craftsmanship in every piece. There's the Philosopher's Stone, the Deluminator, the Triwizard Cup, the Golden Egg opening its three gold-plated petals, and the Goblet of Fire, five feet tall and carved from the trunk of a single English elm.

By the end of the *Harry Potter* films, five giant warehouses had been filled with 5,000 pieces of furniture, 12,000 hand-made books, and 40,000 props including 3,000 individual wands.

Wherever possible, the film-makers used real-world solutions rather than CGI.

The broomsticks the wizarding students sit on to play Quidditch are real, but aerial footage is digitally added to the green screen behind them. Try it yourself in the Studio Tour's green-screen experience, if you're not prone to air-sickness!

Hogwarts castle model



Creature Effects



HOGWARTS EXPRESS

Then there's the pièce de résistance, introduced in March: the thoroughly real Great Western Railway 4900 Class 5972 Olton Hall 4-6-0 locomotive and coal tender, originally manufactured in 1937 and the same one that conveyed Harry to Hogwarts in the films. It stands in a 20,000 sq. ft. recreation of Platform 9¾, luggage trolleys and all, puffing out steam.

Visit the compartments in the old-fashioned carriages, decked out with key scenes from the films, or have your

own close encounter with the Dementors: film footage cunningly creates the illusion of a landscape rolling past the windows, so that you can test your acting skills on video when the Dementors fly at you.

Unbelievably, this is just the halfway point. And I haven't even mentioned Harry's circular dormitory, the spiral staircase with moving steps, Dumbledore's office,



The green-screen experience

the huge clock pendulum, the Malfoy Manor drawing room, and the gigantic Magic is Might monument built on top of alarmingly realistic statues of scared Muggles... Make sure to buy yourself a Butterbeer in the mid-point café, while marvelling at the triple-decker purple Knight Bus, to give new energy for Phase II.

HAGRID'S HEAD

This starts in Creature Effects. Wait until you see the animatronic Hagrid head – Robbie Coltrane, at 6' 2", was not tall enough for the half-giant, so in wide shots they used a 6' 10" rugby player. Still not tall enough, so they added stilted shoes, and stuck a gigantic animatronic head on his shoulders. Amazing!

You'll also find a moving Hippogriff, a horrific moving and breathing shrunken Voldemort, the 18-foot spider Aragog (which thankfully doesn't move!) and a Basilisk.

Even the caged dragon in *Harry Potter and the Goblet of Fire* was animatronic, with an actual flame-thrower mounted in its throat.

FITTING TRIBUTE

Yes, Creature Effects is definitely the highlight of the Studio Tour. Or no, wait; perhaps it's the walk down Diagon Alley that follows, past Gringotts Wizarding Bank, Ollivanders wand shop and Weasleys' Wizard Wheezes. Or then again, maybe it's the vast 1:24 scale model of Hogwarts castle...

All in all, the Studio Tour is a fitting tribute to the franchise that not only enthralled millions around the world, but made British film and its talented crew members a byword for excellence. I now realise the only thing that would get you out of there in under two hours is if you bumped into a Portkey. ☹

TM & © Warner Bros. Entertainment Inc.

Harry Potter Publishing Rights © JKR.

Harry Potter characters, names and related indicia are trademarks of and © Warner Bros. Entertainment Inc. All Rights Reserved.

INSIDE THE DREAM FACTORY

Roman statues carved from Styrofoam, oceans created in Europe's largest water tank, and a freshly built medieval set – these are such stuff as dreams are made from

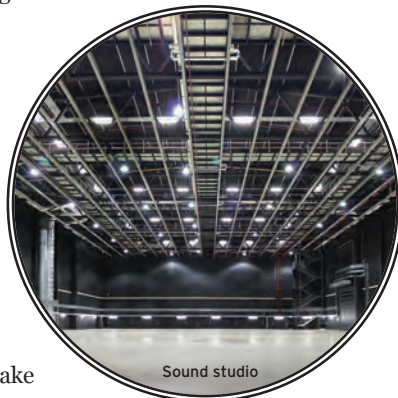


Warner Bros. Studio Tour London – The Making of *Harry Potter* is unique in being situated on the grounds of a working studio. “Sometimes the school parties come out of there and see explosions from the filming nearby!” says studio vice-president Emily Stillman.

She's agreed to take me on a tour of the Warner Bros. Studios Leavesden, normally closed to visitors, into which Warner Bros. invested £100 million after the *Harry Potter* films wrapped, to get a glimpse of what it really takes to make

a big-budget film. We whizz round it, thrillingly, in a golf buggy, just like in Hollywood!

We need it: it's vast. There are 13 sound stages, which are giant sound-proofed hangars. We take a peek into D Stage, home to one of the largest indoor water tanks, where



the underwater scenes in *Kingsman: The Secret Service* were shot. Four stages were newly built this year: “We've been constantly busy since opening in 2012,” says Emily.

You only have to look at the list of productions filmed at WBSL over the past three years to see it's already a favourite among Hollywood directors. The 100-acre backlot is so versatile that alternative locations often aren't needed. In fact, Tom Cruise's *Edge of Tomorrow* was shot entirely at Leavesden (with the exception of Trafalgar Square). A model of Paris was erected in a huge exterior tank that was

then used for a magnificent whaling ship in Ron Howard's *In the Heart of the Sea*.

We pass a workshop where craftsmen create “Roman” sculptures out of Styrofoam, and another filled with the merry hammering and drilling of carpenters. A small army goes into making every film (see box).

Finally, I get an aerial view of the whole impressive spread from the old control

tower (the site was once an airplane factory and airfield). The scene is a hive of activity, with the latest set being erected for Guy Ritchie's forthcoming *King Arthur* epic.

With each production creating an amazing array of unique props, sets and costumes, it's easy to see how eight *Harry Potter* films produced enough treasures to fill the adjacent tour. 🎬



10 CREDITS EXPLAINED

Armorer: also called the weapons master; a specialist in the props department who handles firearms and other weapons.

Best boy: chief assistant to the gaffer or grip.

Breakdown artist: working in the costume department, responsible for ageing and distressing clothes so they look lived-in.

Foley artist: creates sound effects such as footsteps or punches or slamming doors in post-synch, after filming.

Gaffer: chief lighting technician.

Greensman: part of the set department; responsible for real or artificial plants.

Grip: lighting and rigging technicians.

Python wrangler: more prosaically called a cable puller or utility sound technician; keeps sound cables tangle-free.

Runner: all-purpose young helper, sometimes as unpaid work experience.

'Spark': popular term for an electrician.



★★★

LAND OF HOPE & GLORY

What's so unique about the UK? Just take a
look at the landscapes

★★★

When you think of film locations in the UK, you may call to mind the noble palaces, imposing castles, stately homes and grand Georgian houses seen in countless historical dramas or turned into fairy tales such as Disney's *Cinderella*. There are all these, and more, to be found in the following guide.

But for a small nation, the UK also packs an extraordinary diversity of places between its shores: from windswept cliff to deserted moorland, ancient forest to mountain peak, picturesque village to futuristic cityscape, all within a few hours. In association with the British Film Commission, the national agency with a remit to maximise and support the production of international feature film and high-end television in the UK (see p. 4), we here showcase a variety of stunning locations that you may have seen on screen, and invite you to come and experience them for yourself. →

NORTHERN IRELAND

The Giant's Causeway: These volcanic basalt columns were used in *Dracula Untold* for parts of Broken Tooth Mountain, where Vlad enters to become a vampire. Northern Ireland also doubles as Westeros in *Game of Thrones*.



SCOTLAND

Isle of Skye: The upcoming *Macbeth*, starring Michael Fassbender and Marion Cotillard, was shot in wonderful Skye. Numerous other productions have used its spectacular vistas, such as *Prometheus* which was shot at the Old Man of Storr.



WALES

South Stack Lighthouse: This stunning islet in Southern Wales is the backdrop to upcoming thriller *Take Down*, about children who fight back when their school is taken hostage. Wales' beaches also feature in numerous films as battle grounds.



ENGLAND

Black Park: *Maleficent*, Disney's retelling of *Sleeping Beauty* starring Angelina Jolie, was shot in these 500 acres of woodland and lakes in Buckinghamshire. It's just one of the many fairy-tale locations in England to inspire Hollywood.



LONDON

Westminster: One shot of the historic Big Ben tower and the sleek new London Eye facing each other is enough to evoke London in a film. Recent shoots in Westminister include *Skyfall* and *Suffragette*.



THE ACE OF PLACE

Need to land a helicopter in Trafalgar Square or film in a stately home? Location managers like Sue Quinn can fix it



It was during a planning meeting for *Edge of Tomorrow* that Sue Quinn first learned of the film-makers' vision for the closing scene. What finer climax to a military sci-fi

blockbuster set in London than for Tom Cruise to land his helicopter triumphantly in Trafalgar Square? The star himself turned to Sue, the film's location manager, fixed her with his determined stare, and switched on his million-dollar smile: "You can do that, can't you, Sue?" he asked.

"Everyone turned and looked at me," recalls Sue Quinn now. "It was embarrassing, because I really didn't know the answer!"

It took three months

for a team of five, with the help of the British Film Commission, to pull it off. They had to get the Mayor's office, Westminster Council and Transport for London on board, because 74 bus routes had to be diverted; then the Ministry of Defence, the embassies, the National Gallery, businesses...

And all that is just for a single scene. Welcome to the world of the location manager, without whom none of the guide on the following pages

would have been possible!

"There is no typical day, I promise you," says Sue. "You work closely with the director and designer and realise their vision. You have to work out what's best to build on set, what's best to shoot on location. Then you go and take hundreds of photos, board them up and present them."

Sue knows what can be done with visual effects, having worked on the *Harry Potter* films. "But it's very hard for actors to act against a green screen, so locations are very important."

In her 20 years in the profession, Sue has visited every single stately home in the UK, and says they are "absolutely amazing". She

also praises Britain's great outdoors.

Derbyshire, she says, is a stunning county, underused by film crews. When we

"Last year, for Tarzan, we recreated Africa within the M25!"

spoke, she had just spent the week filming in the Brecon Beacons in south Wales. And she fell in love with Scotland on the *Harry Potter* shoots. "It's God's own country," she enthuses. "Ben Nevis is just stunning when you see it in

all types of weather."

The capital, she says, is much easier to film in now that Film London is there to help, and "incredibly rich" in all kinds of locations: not just the famous landmarks, but also the council estates used in low-budget films.

"Some are fantastically designed, like Thamesmead, where *A Clockwork Orange* was filmed," says Sue. "When I did *Love Actually*, they wanted iconic places; but when I did *Dirty Pretty Things*, Stephen Frears wanted bits of London no one knew. Last year, for *Tarzan*, we recreated Africa all within the M25! We put a beautiful boat on Virginia Water and made Ashridge Estate look like Africa." 

SEE THE SCENE

The ultimate UK locations guide, from *Prometheus* on the Isle of Skye to *Poldark* in Cornwall

WEST

Antony House, Cornwall

After Tim Burton's *Alice in Wonderland* came out in 2010, visitor numbers at Antony House surged from 25,000 to 100,000. Admire the formal garden with its wonderful flowers and modern sculptures, and splendid portraits in the house, including several by Joshua Reynolds (Mar-Oct).

Dartmoor, Devon

Steven Spielberg, who directed *War Horse*, said: "I have never before been gifted with such an abundance of natural beauty as I experienced on Dartmoor." Find the rustic settings around Combestone Tor, Haytor and Ringmoor Down; you can visit



Antony House in Cornwall

but not enter the farm near Meavy at Ditsworthy Warren House.

Wells, Somerset

Edgar Wright and Simon Pegg's cult comedy *Hot Fuzz* takes place in the sleepy town of Wells in Somerset, with Wells Cathedral digitally erased. You can book into the Swan Hotel, where super-cop Nic Angel stayed. Mystical Glastonbury Tor is only a few miles away.

Montacute Hall, Somerset

The most spectacular of many locations in the BBC's historical drama *Wolf Hall*, Montacute Hall stands in for Henry VIII's Greenwich Palace. It's open to visitors, and you can even stay in its Odcombe Lodge or South Lodge. Barrington Court, also in Somerset, provided interiors for Cardinal Wolsey's home.

Stonehenge, Wiltshire

The prehistoric stone circle has witnessed few stranger sights than actor Erik Selvig naked but for his shoes and socks when filming *Thor: The Dark World*. Except, perhaps, for Matt Smith as *Doctor Who* addressing a fleet of alien spaceships from atop its ancient stones. *Spinal Tap* fans also cherish the moment a tiny Stonehenge is lowered on to the stage due to a mix-up over feet and inches.

West Bay, Dorset

The writer of *Broadchurch* describes it as "a love letter to the Jurassic Coast". Fans of the ITV series are as enamoured of the towering cliffs and sandy beaches as of the plot's twists and turns. Beach scenes and some exteriors were filmed in the very real town of West Bay. The Bull Hotel is where the cast stayed. The cliff-top murder hut is at Eype, a mile west.

Mapperton House, Dorset

Charlotte Bruus Christensen, cinematographer of the recent *Far from the Madding Crowd*, says of Devon: "We worked with the scenery as a character just as much as Bathsheba or Gabriel Oak." The house that Bathsheba (Carey Mulligan) inherits is Mapperton. The Jacobean manor is open weekdays from 6 July to 7 August, and its romantic gardens from March to October.



Game of Thrones

ENTER THE THRONE ZONE

No other TV series in recent years has aroused the same fevered devotion as *Game of Thrones*. It's gone beyond cult viewing: the fourth season averaged 18.4 million viewers a week in the US alone – a new HBO record.

Ordinary mortals can't visit the Belfast set, so nearby Castle Ward, better known to fans as Winterfell, has become the key attraction. The Clearsky Adventure Centre there offers archery lessons – in *Thrones* gear, of course – and there are also self-guided cycling tours of nearby locations, such as the tree branch where Brienne discovers three hanging bodies, or King Robert's procession route. In nearby Strangford village, you can devour the King's Banquet in the Cuan guesthouse (25 July and 29 Aug, or by arrangement for groups of 20 or more) where many of the cast stayed.

But it's Northern Ireland's natural wonders that make the *Thrones* world look so spectacular. A little south you'll

find the Haunted Forest at Tollymore Forest Park, and the Mourne Mountains, which form the entrance to Vaes Dothrak and inspired the Narnia novels.

To the north, the Ballygally Castle Hotel has started a *Game of Thrones* tea, and sells pieces by the show's jewellers Steensons. It's a good base from which to explore the rugged Causeway Coast. Don't miss the famed Dark Hedges, an avenue of twisted beech trees planted in the 18th century: this is the King's Road along which Arya escapes in season two, disguised as a boy. On the northernmost point you will find the Iron Islands at

Ballintoy Harbour and Murlough Bay, while the Cushenden Caves and Larrybane Headland stand in for the Stormlands.

A little further west lies Dragonstone – the tiny temple of Mussenden – which stands on a 120-foot-high cliff above Downhill Beach; and beyond that Binevenagh Mountain, which features in season five.



Game of Thrones, Dark Hedges



Petworth House

SOUTH-EAST

Portsmouth, Hampshire

The astonishing opening to *Les Misérables*, featuring a vast ship being pulled through storm-lashed waves, was filmed in No. 9 Dock at Portsmouth Historic Dockyard; Nelson's ship, HMS Victory, which is Portsmouth's chief attraction, is glimpsed in the scene.

Petworth House, West Sussex

JMW Turner's patron let him paint in the library at Petworth House. *Mr Turner* star Timothy Spall says: "The shot of Turner painting a woman and two girls in the library is an exact replica, even colour-wise, of a watercolour he painted called *The Artist and his Admirers*. To be in the very room where Turner painted this scene, to be inside that painting, was an astounding privilege." The 17th-century mansion contains the National Trust's finest collection of paintings.



The Imitation Game

Bourne Woods, Surrey

The pretty woodland with its walking and cycling trails is where Thor reduced a rock giant to rubble, and where the frenetic opening battle in *Avengers: Age of Ultron* was filmed. It's also where Russell Crowe "unleashed hell" in *Gladiator* and attacked a castle in *Robin Hood*, and it appeared in *Wolfman*, *Snow White and the Huntsman* and *War Horse*.

The Historic Dockyard, Chatham, Kent

This hugely popular attraction features as Poplar Dock in *Call the Midwife*; there's a monthly location tour. The upcoming *Suffragette* was partly shot

here, as were *Vanity Fair*, *Les Misérables*, *The Mummy* and *Downton Abbey*.

CENTRAL

Bletchley Park, Buckinghamshire

Discover the full story of the cracking of the Nazis' Enigma Code at Bletchley Park, now a museum. An exhibition about *The Imitation Game*, starring Benedict Cumberbatch, is on until 1 November. The place may look a little different to you: filming really took place in Joyce Park in Nettlebed, Oxfordshire (not open); Chesham's Church St stood in for the village of Bletchley.

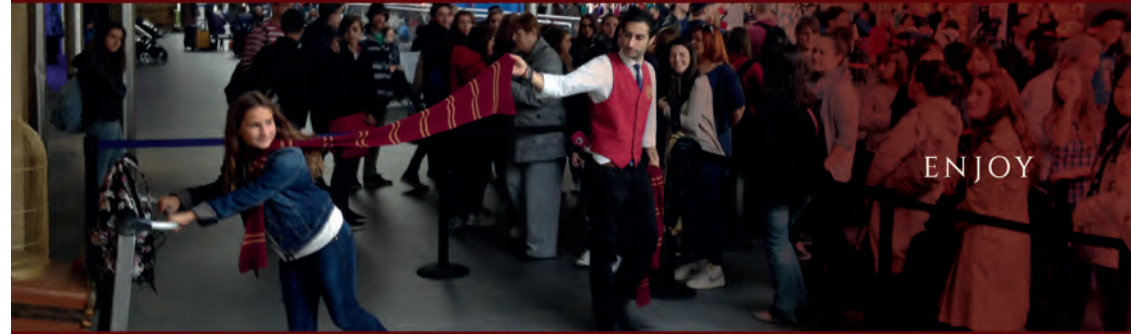
Gloucester Cathedral, Gloucestershire

The cloisters double as the corridors of Hogwarts in three *Harry Potter* films, and the cathedral has also been seen in *Wolf Hall* and *Doctor Who*. Gloucester Docks was used in *Alice in Wonderland: Through the Looking Glass*, out in 2016.

KEIRA KNIGHTLEY © 2014 THE WEINSTEIN COMPANY. ALL RIGHTS RESERVED. PETWORTH IS © NATIONAL TRUST IMAGES/ARNHEL DE SERRA



EXPLORE



ENJOY



EXPERIENCE

COME AND EXPLORE THE HARRY POTTER SHOP AND HAVE YOUR PHOTO TAKEN WITH THE FAMOUS TROLLEY ON PLATFORM 9 3/4 AT KING'S CROSS STATION, LONDON

Letchworth/Welwyn Garden City, Hertfordshire

Edgar Wright and Simon Pegg's comedy *World's End* revolves around a literally apocalyptic pub crawl. Fancy recreating it? "Newton Haven" is actually Letchworth and Welwyn Garden City and, luckily for your liver, only some of the 12 pubs featured are real (though names were changed). They are: the Peartree on Hollybush Lane; The Doctor's Tonic on Church Road; the Two Willows on Howardsgate; the Parkway Bar on Parkway; the Three Magnets on Leys Avenue; the Colonnade on Station Road; the Arena Tavern on Arena Parade; and the Gardeners' Arms on Wilbury Hills Road.

Cambridge, Cambridgeshire

Eddie Redmayne captured the hearts of movie-goers in *The Theory of Everything*, and so did the historic university town of Cambridge. The spectacular May Ball was shot in beautiful St John's College, and other



The dreaming spires of Oxford

locations include Trinity Lane and the Arts School lecture theatre. Ely Cathedral, 15 miles north, stood in for Westminster Abbey in *The King's Speech*.

Oxford, Oxfordshire

The dreaming spires of Oxford have been seen in countless films including fantasy blockbuster *The Golden Compass*, the *Harry Potter* series and *The Riot Club*, as well as the classic detective series *Inspector Morse*; Hugh

Grant made his feature debut, while still at New College, in the Oxford-set *Privileged*, stripped to the waist and carrying a deer over his shoulders.

Blenheim Palace, Oxfordshire

Just north of Oxford, the vast former home of Winston Churchill inspired the palace in *Cinderella* as well as furnishing the actual gardens. The ornate clock that counts down to midnight, however, is taken from Cliveden House in Buckinghamshire. The Liz Hurley-starring TV series *The Royals* also filmed here.

Wallingford, Oxfordshire

The very British rural detective drama *Midsomer Murders* is still going strong after 17 years. The town of Causton is filmed mostly in the pretty, riverside Wallingford – where *Miss Marple* creator Agatha Christie also lived and worked. Other locations include Ewelme village, Dorchester Abbey's museum, Mapledurham House, Warborough, Lewknor, Brightwell Baldwin, Nettlebed, Rotherfield and the Haseleys.



The Theory of Everything, Cambridge



A day in Downton



Downton Abbey has won tens of millions of fans with its very British combination of high drama and high tea. Now Golden Tours invites you to experience life in Downton for the day.

An air-conditioned Golden Tours coach, with free wi-fi, will drive you from central London to beautiful Oxfordshire. Your first stop, to see how the upper-class lived, will be Blenheim Palace. The building and landscaped gardens are like a fairytale – in fact, they were used as a location for Disney's *Cinderella*.

It's a short drive to the Cotswolds village of Bampton, which doubles as Downton. The library stood in for Downton Cottage Hospital, St. Mary's Church became Downton Church, and Churchgate House gave its exterior to the Crawleys' home! You'll also see the Grantham Arms, where Tom Branson lodged.

The tour continues with the village of Shilton. Have lunch, if you choose, in The Red Lion public house, where Mr Bates went to work after he left *Downton Abbey* in series two.

The final stop is Cogges Manor Farm (Yew Tree Farm). Learn about the storyline between Charles Blake and Lady Mary, and take tea in the cow shed Cafe at Cogges before exploring the house and farm buildings where the "pig scene" was shot.

Then it's back to London in time for dinner. The tour may be over, but the memories, and the photos, will last a lifetime. *The Downton Abbey Filming Locations and Blenheim Palace tour costs from £74. See www.goldentours.com or call +44 (0)207 630 2039.*

© 2014 THE WEINSTEIN COMPANY. ALL RIGHTS RESERVED/SKY. VISITENGLAND/EXPERIENCE OXFORDSHIRE



THE COAST WITH THE MOST

When Aidan Turner took off his shirt to scythe a field in **Poldark**, it unleashed a hormonal surge unseen in Britain since Mr Darcy emerged dripping from the water in *Pride and Prejudice*. Viewers may not be able to make hay with *Poldark*'s star, but they can tread the ground his feet have touched. Cornwall is braced for an influx of fans, particularly after the series airs in America in June.

The Cornish coast looks as ravishing in *Poldark* as its star: in fact, during filming skies were too blue, and clouds had to be digitally added. The dramatic shipwreck scene was shot at Church Cove, Gunwalloe. Porthgwarra Cove, near



Land's End, provides clear waters and terrific views from the South West Coast Path. Levant Mine, which uniquely retains the original steam-powered bream engine on-site, stood in for Tressiders Rolling Mill, while the dramatic clifftop Owls and Crowns mines of Bottalack became the family mine Poldark tries to resurrect. More engine houses perch atop the cliffs at St Agnes Head, used as Nampara Valley. North and inland, visit wild Bodmin Moor, with its standing stones and medieval farms, a spectacular setting for *Poldark*'s cottage and riding scenes. As for Truro, though well worth a visit, you'll seek key sights in vain: those scenes were filmed in Corsham in Wiltshire.

Hatfield House, Hertfordshire

The childhood home of Queen Elizabeth I features in period dramas such as *Elizabeth: The Golden Age*, and was home to Michael Keaton's *Batman* and Angelina Jolie's *Lara Croft: Tomb Raider*. As well as visiting the house, gardens, woodlands and farm (Wed-Sun), on most Friday evenings you can book for a medieval banquet in the Great Hall.

Highclere Castle, Berkshire Julian Fellowes, a family friend of the resident Carnarvons, had this very place in mind when

writing ITV hit *Downton Abbey*. Book in advance: it's open only 60 to 70 days a year, and very popular. It's possible to stay at the London Lodge, at the entrance to Highclere Park, but in practice it's booked up until 2016. Instead try the former coach house, now the Carnarvon Arms hotel.

The Forest of Dean, Gloucestershire

The ancient Forest of Dean contains the gnarled and twisty Puzzlewood, which inspired Tolkien. The new *Star Wars* movie, out in December, was filmed here, as was *Jack the*

Giant Slayer, *Da Vinci's Demons*, *Merlin* and *Atlantis*. Clearwell Caves were used in *Doctor Who*, and Symonds Yat Rock viewpoint was in *Harry Potter and the Deathly Hallows*.

NORTH

Castle Howard, Yorkshire

Although the vast Castle Howard is often seen on the screen, it will forever be synonymous with *Brideshead Revisited*: it was used both in the iconic 1981 TV series with Jeremy Irons and the 2008 film

with Ben Whishaw. Adults will enjoy the history and the 1,000 acres of grounds; kids can take a land train to the adventure playground by the lake.

Haddon Hall, Derbyshire

Haddon Hall, much of which was built in the 12th century, is perhaps England's finest fortified medieval manor house. It has an imposing crenelated entrance, complete with gargoyles, and a 14th-century Banqueting Hall with minstrels' gallery. It was 'Thornfield' both in the 2011 *Jane Eyre* with Michael Fassbender and Franco Zeffirelli's 1996 film; but to fans of *The Princess Bride*, it is Humperdinck's castle.

Liverpool, Merseyside

Liverpool is still best known for the Beatles. *Nowhere Boy*, about John Lennon's early life, used Sacred Heart Catholic College for school scenes, though Lennon's real home on Menlove Avenue, which is open to visit, was not practical for filming. Liverpool is the UK's most filmed city after London, its varied architecture often doubling for other world cities.

Manchester, Greater Manchester

Fans of *Coronation Street* can visit the soap opera's set until 31 December, including room sets opened for the first time to the public in April 2014, and

the iconic Rovers Return pub. With the BBC having relocated to Manchester, expect many more dramas set there to rival the brilliant time-travel police series *Life on Mars*. The Canal Street area, the premier LGBT centre outside London, was made famous by TV's *Queer As Folk* and the recent *Cucumber*.

Wollaton Hall, Nottinghamshire

Mentmore Towers in Buckinghamshire was Wayne Manor in *Batman Begins*, but the *Dark Knight* films relocated to Wollaton Hall, the design of which was based on the earlier building. (See London section for the Osterley Park House

Downton Abbey, Highclere Castle





Macbeth, Bamburgh Castle

BAMBURGH IS NICK MCCANN

interiors.) On 30 August, Wollaton Hall hosts a screening of *The Dark Knight Rises!*

Bamburgh Castle, Northumberland

This huge, brooding castle is a key location in the upcoming *Macbeth* film starring Michael Fassbender. It also featured in *Harry Potter*, *Blackadder* and Polanski's *Macbeth*.

Alnwick Castle, Northumberland

This imposing castle doubled as Hogwarts in the first two *Harry Potter* films, and featured in the 2014 Christmas special of *Downton Abbey*. It is currently hosting an exhibition of photography, costumes and props from the *Downton* shoot.

Hill Top, Cumbria

Renée Zellweger's *Miss Potter* showed how the author of *Peter Rabbit* was influenced by the

beauty of her native Lake District. Visit her home at Hill Top, now a Potter museum; Yew Tree Farm, which stood in for Hill Top in the film, now a B&B and tea room; the Beatrix Potter Gallery in Hawkshead; and the World of Beatrix Potter Attraction in Bowness-on-Windermere. Outdoor locations include Keswick and Deerwater, Coniston and Tarn Hows, Loughrigg, and Loweswater.

Hogwarts Express from the *Harry Potter* films, Glenfinnan Viaduct

TM & © Warner Bros. Entertainment Inc. *Harry Potter* Publishing Rights © JKR. *Harry Potter* characters, names and related indicia are trademarks of and © Warner Bros. Entertainment Inc. All Rights Reserved.

SCOTLAND

Glenfinnan Viaduct

To fully recreate Harry Potter's trips to Hogwarts, take the Jacobite steam train along the West Highland line (May to 21 October). Starting near Ben Nevis, the highest mountain in Britain, and finishing in Mallaig Bay, it crosses the 21-arch

Glenfinnan Viaduct made famous by the film series.

Doune Castle

Doune Castle, near Stirling, features in time-travelling TV romance *Outlander*, but will forever be known for John Cleese taunting King Arthur with "Your mother was a hamster and your father smelled of elderberries" in *Monty Python and the Holy Grail*. Ex-Python Terry Jones has voiced a hilarious audio guide, and the gift shop is full of Python goodies.

Glencoe

The last James Bond movie, *Skyfall*, climaxes in beautiful Glencoe. The stunning scenery

in the driving sequence is of the peaks of Buachaille Etive Mor and Buachaille Etive Beag, seen from the A82. The Highlands' rugged beauty has graced many a film, most memorably Mel Gibson's *Braveheart*.

Rowchoish bothy

The unsettling sci-fi film *Under the Skin* may not be a great ad for Glasgow, but the rural scenes are breathtaking. The beach where Scarlett Johansson attacks a young swimmer is in Auchmithie, and the ruined castle she visits is Tantallon. Rowchoish bothy, the hut in the woods she sleeps in, is part of a network of shelters for walkers, and is situated off the eastern shore of Loch Lomond.

Isle of Skye

VisitScotland Chairman Mike Cantlay says that "Skye possesses an ethereal, out-of-this-world quality", so it's no surprise to see it as an alien landscape in *Alien* prequel *Prometheus*. Most striking is the huge monolith dubbed the Old Man of Storr (p. 18).

Edinburgh

Picturesque Edinburgh is closely associated with Danny Boyle's *Shallow Grave* and *Trainspotting*, and provided spectacular panoramic shots in 2011 romance *One Day*, which ends with Anne Hathaway high above the city on Arthur's Seat. It's actually an extinct volcano, and an hour's hike to the top.

DRAWN TO BE WILD

The UK is a big draw (sorry) for animators, right back to *Peter Pan* and *101 Dalmatians*. In recent years, *Cars 2* climaxed with a chase around Buckingham Palace roundabout and down Whitehall, and *Brave* was influenced by the Pixar team's trip to Scotland.

"We took photographs and video, sketched and wrote stories," said *Brave*'s producer, Katherine Sarafian. "We brought everything back and spread it all out, loaded it into our computers. We worked really hard to bring the magic, beauty and ruggedness of Scotland to life."

After visiting Dunnottar Castle, in Aberdeenshire, they changed the setting

for the fictional DunBroch Castle to an outpost by the sea. The haunting Calanais Standing Stones, on the Isle of Lewis, found their way directly into the film, and the wild Glen Affric, 15 miles from Loch Ness, inspired its landscapes.

Another animated favourite, *Shaun the Sheep*, thinks Britain is so baa-rilliant he agreed to be a mascot for UK holidays (www.holidaysathomearegreat.com). Visit the ewe-nique Shaun the Sheep Experience in Land's End; join in the Shaun the Sheep Championsheeps at Marsh Farm in Essex (peak days only); and find all 70 Shaun the Sheep painted sculptures in Bristol (6 Jul-31 Aug).



MACHOSAN

WALES

Henrhyd Falls, Brecon Beacons

There has been such a surge of visitors on the Nant Llech Trail to Henrhyd Falls that, this year, a series of steps and a 40-metre boardwalk were added. That's because the 90-foot wall of water, which you really can walk behind, marks the entrance to the bat cave in *The Dark Knight Rises*.

Cardiff, south Wales

Russell T Davies, the Welsh-born writer/producer who rebooted *Doctor Who* in 2005, insisted on it being filmed in Cardiff. Visit the recently regenerated *Doctor Who* Experience, which offers an Interactive Experience and an Exhibition Hall with the world's largest collection of Whovian memorabilia. The city, with its spectacular Millennium Centre and busy waterfront, also hosted *Torchwood* and *Sherlock*. Geek heaven!

Other Welsh locations

New Quay was seen in the Dylan Thomas film *The Edge of Love*, and inspired his poem *Under Milkwood*; Margam Park in Neath Port Talbot is in US TV series *Da Vinci's Demons*; Aberystwyth is home to Welsh detective drama *Hinterland* (or *Y Gwyll*); Freshwater West beach in Pembrokeshire is where Shell Cottage was built for *Harry Potter and the Deathly Hallows*; and the hotel-village of Portmeirion in Snowdonia is forever synonymous with cult 1960s TV thriller *The Prisoner*.

CENTRAL LONDON

Coca-Cola London Eye

The *Fantastic Four* (2007) stopped the London Eye falling into a whirlpool, but it was later smashed by a giant robot in *The Day the Earth Stopped* (2008) and blown up in *GI Joe: Retaliation* (2013). Luckily for the 3.5 million visitors a year that make it the UK's leading paid tourist attraction, it's still standing strong!

Millennium Bridge

Crossing the Millennium Bridge from Tate Modern to St Paul's, you'll be impressed by its sleek modern beauty. The makers of *Guardians of the Galaxy* found its design so far-out that they superimposed it into an alien city. It was dubbed "the bendy bridge" at launch, when teething troubles caused it to sway; in *Harry Potter and the Half-Blood Prince*, the Dementors twist it like a pretzel until it collapses into the Thames.

BBC



Doctor Who Experience, Cardiff



Paddington train station

Paddington is out now on DVD

The British Museum

The British Museum gave the climax to Hitchcock's *Blackmail* way back in 1929, and featured in the *Mummy* series. Last year it starred in *Night at the Museum: Secret of the Tomb*, in which exhibits come to life. But although the museum is big on Egyptian artefacts, many elements in the film are invented, from the triceratops skeleton to the nine-headed Chinese snake demon.

Westminster Abbey

The spectacular church in which monarchs are crowned is still better known by some from *The Da Vinci Code*: they will seek out Isaac Newton's tomb, and the octagonal Chapter House where the climax plays out. The film actually used Lincoln Cathedral as Abbey authorities deemed the book "theologically unsound". It did,

however, feature the real Temple Church, historic home of the Knights Templar.

Victoria and Albert Museum

This ornate, 51,000-square-metre museum has been used in dance comedy *Cuban Fury* and Danny Boyle's thriller *Trance*, but most impressively its Cast Courts gallery doubled for Paris in Martin Scorsese's *Hugo*, starring Jude Law.

Natural History Museum

The interiors are spectacular enough to be an intergalactic space palace in *Jupiter Ascending*, which used the Zoology basement corridor and the Old General Herbarium, and had Channing Tatum roller-skating into the main Hintze Hall. Paddington was also nearly killed and stuffed here by a villainous employee, played by Nicole Kidman.

Train stations

The best-known train station in cinema must be King's Cross, where you will now find a *Harry Potter* shop at Platform 9¾: buy T-shirts, jewellery, toys, even wands. Paddington Station gave its name to a little lost bear found there, in the highest-grossing non-Hollywood family film ever, and he has his own shop in the station as well. Waterloo Station featured in *The Bourne Ultimatum*.



Harry Potter shop at Platform 9¾

Lists continue on p.34 →



A VIEW TO A THRILL

Despite his Scottish origins, if you want to follow in **James Bond's** immaculately shod footsteps, there is no place better than London. Every screen Bond since Sean Connery has had his shirts tailor-made at Turnbull & Asser, in Jermyn Street. After they first measured Daniel Craig, he bulked up so much prior to filming *Casino Royale* that they had to fly a tailor out to Barbados for an emergency refitting!

In the books, Bond always wore the scent Floris No 89 from Floris of London, on the same street, and the perfumier has just collaborated with Dukes Bar on St James's Place, where Bond author Ian Fleming acquired the line "shaken, not stirred" to create the Fleming 89 cocktail. Near Hyde Park Corner is Les Ambassadeurs club, a 200-year-old casino where we first heard



the immortal line "The name's Bond, James Bond" in *Dr. No*.

Prefer something more active? Recreate the jet pack from *Thunderball* in Surrey Docks with Jetlev-Flyer UK, or take a speedboat down the Thames:

Thames Rib Experience offers a Bond-themed Ultimate MI6 Spy Experience. You can even relive the moment when Pierce Brosnan drops from a hot-air balloon on to the roof of the Millennium Dome – it's called The O2 arena now, and Up at the O2 takes you right to the top for amazing views.

Finally, don't miss the *Bond In Motion* exhibition at the London Film Museum, in Covent Garden, which features cars, submarines, aircraft, boats and motorcycles from the films. New additions are promised this year from the upcoming James Bond film, *SPECTRE*.

© DANJAO, LCC, UNITED ARTISTS CORPORATION, COLUMBIA PICTURES INDUSTRIES, INC. ALL RIGHTS RESERVED. © MGM



CONVENIENT RETURN TRANSFERS TO WARNER BROS. STUDIO TOUR LONDON WITH GOLDEN TOURS

The Studio Tour offers visitors the chance to walk along Diagon Alley, step inside the Great Hall and delve into the behind-the-scenes magic of the Harry Potter™ films series. With return transfers provided by preferred partners Golden Tours, visitors can travel directly from central London to the Studio Tour in comfort. Branded buses depart every hour and complete their journey at the Studio Tour's entrance. New for 2015: Platform 9 ¾ and the original Hogwarts Express.



To book your tour, visit www.goldentours.com or call 0044 (0)20 7630 2039

YOUR HOMES FROM HOLMES

The BBC's *Sherlock*

It doesn't take much sleuthing to get on the trail of **Sherlock Holmes**, star of the Robert Downey Jr film series and the BBC's modern-day update with Benedict Cumberbatch.

The Sherlock Holmes Museum now proudly bears the famous number 221b on Baker Street, although it is situated between numbers 237 and 241. Set over three floors, it recreates how Holmes's boarding house might have looked in Victorian times, with the aid of mannequins and props. You can even buy a Harris tweed deerstalker hat in the gift shop next door. Both Downey Jr and Cumberbatch can be seen in full Holmes

regalia in nearby Madame Tussauds. Speedy's Café, at 187 North Gower Street, near Euston Square tube station, doubles as 221b in the BBC series. Fans flock there for a selfie and a slap-up English breakfast.

Strangely, you can also find Sherlock Holmes's study just off Trafalgar Square (which features in the BBC's *Blind Banker* episode). The Sherlock Holmes pub on Northumberland Street houses the Festival of Britain's Holmes display, unchanged since 1957. Have a drink on the roof terrace – Holmes was fond of whisky and soda and the odd Burgundy – followed by dinner at Simpson's-in-the-Strand, his favourite restaurant.

St Bartholomew the Great

To recreate Asgard for Thor's dream sequence, *The Avengers: Age of Ultron* turned to the ancient stone pillars of this priory church, London's oldest. Founded as a monastery in 1123, it has some of the finest Romanesque architecture in the capital – and a rather nice café in the cloisters.

Harvey Nichols

Romeo and Juliet have no greater love than do Eddy and Pats for "Harvey Nicks" in cult sit-com *Absolutely Fabulous* – even if they did get their car clamped outside in one episode. You absolutely must, sweetie darling, have a fabulous long lunch at the 5th floor Café and Terrace – or hit the Bolly and

Stoli in the green and purple Champagne bar! Be quick: a feature film is in the works.

Selfridges

Selfridges has moved on since 100 years ago, when the ITV and PBS series *Mr. Selfridge* is set, so the interior of the great department store he founded was recreated on set in north

London, with exteriors filmed in Chatham Historic Dockyard in Kent (see South-East). You'll still want to visit this magnificent store, which has the world's biggest denim department, a huge shoe shop, a food hall, and the first cinema in a department store.

The Shard

Although it's the tallest building in the European Union, giving visitors spectacular views of the capital, The Shard has done little more than loom in the background of Hollywood movies to date. Perhaps it's because Matt Smith's *Doctor Who* has given everyone else a zooming up the outside on an antigravity motorbike.

St Paul's Cathedral

The Geometric Staircase of Wren's architectural masterpiece doubled as the Divination Stairwell in *Harry Potter and the Prisoner of Azkaban*, and hosted a chase in Robert Downey Jr's *Sherlock Holmes*. The rival Sherlock, Benedict Cumberbatch, obviously took offence: St Paul's is clearly visible when he blows up future London in *Star Trek: Into Darkness*. In *Doctor Who*, the marvellous dome opens up and spews out flying Cybermen.



Geometric Staircase, St Paul's Cathedral

Tower of London

Tom Cruise shot here by night in *Mission Impossible: Rogue Nation*, out at the end of July, as well as chasing down Fleet Street and Piccadilly Circus. But



Claim your own piece of TV HISTORY

Ever wondered what it's like to be in front of the camera or behind a microphone? Do you think you could present the weather, read the news or give acting a go in a live radio play? Now's your chance to try; as the BBC opens its doors and invites you in.

ADVERTISEMENT FEATURE

Take the tour, walk in the footsteps of the nation's biggest stars and find out what happens behind the scenes at the world's most iconic broadcasting company.



BROADCASTING HOUSE

Follow the lead of *The One Show*'s A-list guests and put your feet up on the iconic sofa. See cutting-edge technology in action in the international newsroom, and the radio theatre where concerts are recorded.

MEDIA CITY UK

Salford is home to BBC Children's TV, BBC Sport and the BBC Philharmonic Orchestra. *Blue Peter* and *BBC Breakfast* are filmed here; plus live radio broadcasting from BBC Radio 5 live and BBC Radio 6 Music.

We have tours across the UK and they're all unique. To book tickets and find out more, visit bbc.co.uk/showsandtours

whatever remarkable sights the Tower of London has witnessed within its imposing stone walls over a thousand years and more, none can have prepared it for Miss Piggy's wedding, in *Muppets: Most Wanted*.

Borough Market

Loved for its delicious food, Borough Market is also the home of Bridget Jones in both movies: her flat is above The Globe pub. *Lock, Stock and Two Smoking Barrels* was also filmed here.

Trafalgar Square

Have a drink up in the Vista rooftop bar at The Trafalgar hotel: it will give you the same kind of view that Matt Smith's *Doctor Who* had when he landed the TARDIS next to Nelson's Column, and Tom Cruise when he touched down in a helicopter in *Edge of Tomorrow*. Trafalgar Square has also hosted numerous Bollywood films, including a spectacular dance number in *Salaam-e-Ishq* (2007).



Houses of Parliament

The tower of Big Ben has been seen in countless films; the Peter Capaldi incarnation of *Doctor Who* even found an irate dinosaur pacing up and down in front of it. For the climax of *V for Vendetta* (2008), two tanks, 400 masked protestors and 200 'police' massed outside for three nights. *Suffragette*, the upcoming film starring Carey Mulligan and Meryl Streep, was the first ever to be granted permission to film inside the Houses of Parliament. Tours are available most Saturdays, plus weekdays during recesses.

GREATER LONDON

Greenwich

With the National Maritime Museum, Royal Observatory and Cutty Sark, Greenwich is a must-visit. The old Royal Naval College doubled for Paris in *Les Misérables*, 18th-century London in last year's *Belle*, and Cinderella's palace in the recent Disney film. It also hosted the climactic smackdown in *Thor: The Dark World*. Just don't try to follow Thor's tube journey: Greenwich is NOT three stops from Charing Cross!

Kenwood House

In *Notting Hill*, this is where Julia Roberts films a Henry James adaptation. It should have starred in *Belle* – the real 'Belle' lived in Kenwood House, and the portrait that inspired the film hangs on the wall – but it was shut for restoration. Now that it's open again, you can visit the Robert Adam-designed villa with its magnificent views over Hampstead Heath for free.

Rivoli Ballroom

In *The Avengers: Age of Ultron*, Captain America is tempted by a vision of Agent Carter back in the 1940s asking him to stay with her. He can't, but you can – the scene is shot in the Rivoli Ballroom, London's last surviving 1950s ballroom. Once a month, you can go to Jive Party, and Jacky's Jukebox.

Syon Park

This great west London house designed by Robert Adam, with its 200 acres of parks and its Great Conservatory, hosted

Gosford Park, *Poirot*, *Emma*, *Downton Abbey*, *24* and, most recently, *Belle*. Except for the planes passing overhead to Heathrow, it's hard to believe you're in London... or the 21st century, for that matter!

Crystal Palace

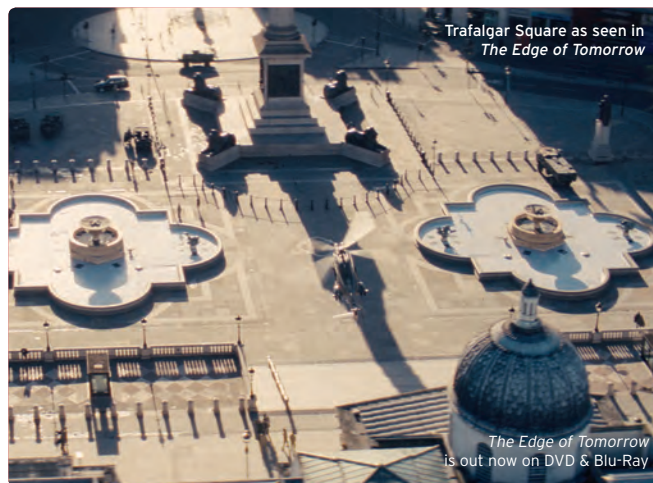
A key race scene in *Rush* was filmed here in south London: James Hunt actually raced here, though the track had to be recreated. The athletics track also witnessed Michael Caine's classic line, "You were only supposed to blow the bloody doors off!", in *The Italian Job*. Crystal Palace Park has surreal dinosaur sculptures – made in 1854, they are oddly shaped – to be seen in the upcoming film of Martin Amis's *London Fields*.



Osterley Park and House

Could there be a more perfect choice for Wayne Manor's interiors in *The Dark Knight Rises*? Not only is Osterley supremely elegant, frozen in time since the 1780s, but the grounds are inhabited by bats,

and there is a *real* secret passage behind a bookcase, through which Batman and Alfred enter the bat cave. Other shoots include the recent BBC *Great Expectations*, *Gulliver's Travels*, *The Young Victoria*, *Edge of Love* and *Miss Potter*.



★★★

CINEMA LIVES!

An eclectic bunch of visionaries, led by Secret Cinema's Fabien Riggall, is changing the way we experience film



Secret Cinema presents
Back to the Future

In 1984, cinema seemed doomed: UK attendances dropped to just 54 million. But cinemas fought back against the threat of video, building the UK's first multiplex in 1985. Attendances have since ballooned to three times that historic low, but there's a new challenge: on-demand, throwing films and TV box sets on to your giant TV at the click of a mouse.

So the film industry is developing experiences you just can't get at home: refurbished cinemas with premium seats



The Empire Strikes Back

or in-movie meals; IMAX; 3D; 4D. One man is doing more than most. In 10 years Fabien Riggall has taken Secret Cinema from a small, secret club to a behemoth that draws more than 100,000

people a year, in the process creating a whole new wave of experiential film screenings.

"There's a generation coming through that is so scared of getting out of its comfort zone," says Riggall. "Every studio and label is owned by these huge corporations – it should be rock 'n' roll; there should be mystery – but instead we're being taken over by giant shopping centres and the whole world is becoming like Dubai!"

"So we look to create environments where people can let go, wander down dark cor-

ridors and have conversations with new people. What we are doing is not just cinema, it's theatre, live music, art and food."

Secret Cinema creates a whole world around a classic film, with massive sets built in disused buildings and a cast of 200 costumed actors. The

now Secret Cinema has recreated a galaxy far, far away in London, for an interactive screening of *Star Wars: The Empire Strikes Back*.

Imagine packing out three months of screenings of a 35-year-old film at £75 a head! It's no wonder other entrepreneurs are getting

"We're not doing just cinema, it's theatre, live music, art and food"

group turned an East End warehouse into a futuristic Los Angeles to screen *Blade Runner*; transformed Alexandra Palace into a desert outpost with cavalry and camels for *Lawrence of Arabia*; and last year attracted 80,000 people to an entire 1950s town, complete with a diner, high school and clock tower, for *Back to the Future*. And

into experiential cinema (see box). But, says Riggall, who also has plans to launch in the USA, the money is all invested in the shows.

"I could list the price of everything, but that would spoil the mystery. I'm not driving around in a Bentley; I don't even have a car – just an old camper van that's always breaking down!"



Secret Cinema presents
The Shawshank Redemption

CARLOTTA CARDANA

DISNEY

FILM WITH A TWIST

Hot Tub Cinema

The ultimate ice-breaker: share a hot tub. In London, Bristol, Birmingham and Manchester.

Sing-A-Long-A

Dress up and sing along to cult classics at the Prince Charles Cinema in London's Leicester Square.

Flickerama

On the weekend of 14-16 August, a Cotswolds field hosts a festival of enhanced screenings including a *Back to the Future* Prom Night.

Zombie Experiences

Star in your own *28 Days Later*, in London, Droitwich, Reading and Warrington.

Outdoor (London)

Summer Screen at Somerset House; Rooftop Film Club in Shoreditch and Peckham Rye; Drive in Film Club at Alexandra Palace; Film at the Scoop, City Hall; Pop Up Screens and Nomad.

Outdoor (UK)

Luna Cinema around the UK; National Trust nights at stately homes; Summer Nights in the North; Cult Screens in Oxfordshire; Picnic Cinema in Cornwall; Screenfields in Manchester; Outdoor and Moonlight Cinema in Newcastle; Sundown Cinema in the south-east.



Amy, July

JULY-DEC 2015

FILM CALENDAR

The best UK festivals and releases

JULY

East End Film Festival, 1-12 July. Founded in 2010, this is now one of the UK's largest film festivals, with 70 features by first- and second-time directors screening to 30,000 people.

Amy, 3 July. Documentary about the life and early death of singer Amy Winehouse (above).

Mission Impossible: Rogue Nation, 30 July. It contains many scenes shot in London, plus Tom Cruise clinging to a plane by his fingertips. As you do.

AUGUST

Chichester International Film Festival, 13-30 Aug. New international feature films. Now in its 24th year.

Man from U.N.C.L.E., 14 Aug. Guy Ritchie's spy reboot, with British locations including Greenwich, the Royal Victoria Docks and Goodwood.

Flickerama, 14-16 Aug. The world's first greenfield film festival, on Great Tew Estate in Oxfordshire, offers a *Back to the Future* Prom Night, *Labyrinth* Masquerade Ball, *The Big Lebowski* Bowling Party and more.

TOM OXLEY

FrightFest, 27-31 Aug. The UK's premier international genre festival takes over the Vue Leicester Square. Be afraid.

SEPTEMBER

Cambridge Film Festival, 3-13 Sep. A venerable event now in its 35th year – in 1996, the festival selected a student short by one Christopher Nolan.

Portobello Film Festival, 3-20 Sep. Major west London indie festival, in its 19th year.

Legend, 11 Sep. Tom Hardy plays both Kray twins, the notorious London gangsters.

Encounters Short Film & Animation Festival, 15-20 Sep. Aardman, producers of *Shaun the Sheep* and *Wallace & Gromit*, is based in Bristol, so it's no surprise to find a key animation festival in the city.

Raindance Film Festival, 23 Sep-4 Oct. Into its 23rd year, this is the leading indie festival.

Victor Frankenstein, 25 Sep. Drama about the original mad scientist (James McAvoy), from the perspective of his assistant, Igor (Daniel Radcliffe).

OCTOBER

London Has Fallen, 2 Oct. London-set sequel to *Olympus Has Fallen*, with Gerard Butler.

BFI London Film Festival, 7-18 Oct. Britain's biggest film



SPECTRE, Nov

festival. Last year, 163,000 film lovers saw 248 features in venues all over the capital.

Colchester International Film Festival, 19-24 Oct. This takes place at several venues including the Firstsite visual arts centre. The festival also hosts the 60-Hour Challenge for making a short.

Suffragette, 30 Oct. This drama about the campaign to give women the right to vote, starring Carey Mulligan and Meryl Streep, is the first ever allowed to film inside the Houses of Parliament.

London International Animation Festival, 23 Oct-1 Nov. Ten days of the best animation from around the world – this is definitely not just for kids.

NOVEMBER

SPECTRE, 6 Nov. The most expensive and spectacular Bond film ever is unleashed (above).

Leeds International Film Festival, 4-19 Nov. A range of features, shorts, documentaries and animation in venues across the city. Now in its 29th year.

DECEMBER

Star Wars: The Force Awakens, 18 Dec. Filming took place in Pinewood Studios, the Forest of Dean and Greenham Common. Disney's share price jumped \$2bn just from the trailer, so it's a fair bet this will be the year's biggest release.



★★ MUSEUMS & ATTRACTIONS ★★

① National Media Museum

This seven-storey Bradford museum houses permanent exhibitions on film and TV, plus three screens, including an IMAX. With an animation gallery and a Magic Factory, it's great for kids, too.

② London Film Museum

The *Bond in Motion* exhibition of 007 cars, helicopters and even subs, has proven so popular that this Covent Garden museum extended it for the rest of 2015.

③ The Cinema Museum

Open to pre-booked visits only, this historic building in Kennington, south London, houses a million pieces of memorabilia, posters and lobby cards, and 17 million feet of film.

④ Warner Bros. Studio Tour London - The Making of Harry Potter

Enjoy a truly magical collection of props, sets and memorabilia from the eight *Harry Potter* films, including the actual train from Platform 9^{3/4}. See feature p. 10.

⑤ Shrek's Adventure

The Kingdom of Far Far Away is recreated on London's South Bank this July in a new £10 million *Shrek* theme park. *Madagascar*, *Kung Fu Panda* and *How to Train Your Dragon* also feature.

⑥ Doctor Who Experience

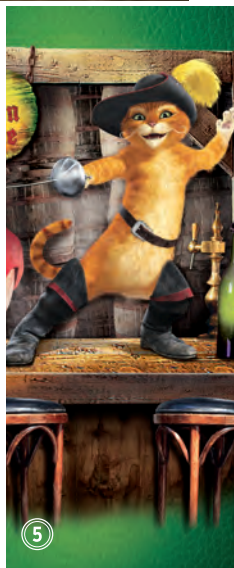
Marvel at every Doctor's costume from 1963 onwards, three TARDIS sets and numerous monsters; plus travel through time on an interactive adventure. *Doctor Who* heaven in Cardiff!

⑦ BBC Tours

Discover how your favourite TV and radio programmes are made in BBC studios all over the UK. There's a new tour of Broadcasting House in central London: sit on the iconic *One Show* sofa!

⑧ Coronation Street Tour

Since the ITV soap relocated in 2014, fans can now walk the cobbles and enter the shops and Rovers Return pub on the very Manchester set where the soap was filmed for more than 50 years.



ALL IMAGES © THE ATTRACTIONS

UK FILM & TV LOCATION MAP



INVERNESS

ABERDEEN

HARRY POTTER

HARRY POTTER

Monty Python & the Holy Grail

Miss Potter

GAME OF THRONES

BELFAST

ROVERS RETURN

CORONATION STREET

MANCHESTER

HARRY POTTER

EDGE of TOMORROW

PADDINGTON

JAMES BOND

THOR

GREENWICH

THE DARK KNIGHT RISES

JANE EYRE

NOTTINGHAM

The THEORY of EVERYTHING

The IMITATION GAME

OXFORD

DOCTOR WHO

LONDON

STONEHENGE

Downton Abbey

Mr Turner

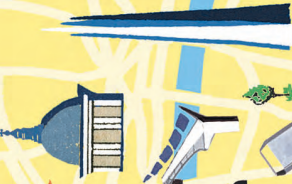
WAR HORSE

Call the Midwife

PORTSMOUTH

BROADCHURCH

Alice in Wonderland



NEW FOR 2015

**"a train you really
don't want to miss"**

The Sun

**"follow in Harry
Potter's footsteps"**

London Evening Standard

**"prepare to
be amazed"**

Radio Times

**"magical new
attraction"**

The Express

TICKETS MUST BE PURCHASED IN ADVANCE

**THE ORIGINAL HOGWARTS EXPRESS
HAS ARRIVED**



WARNER BROS.
STUDIO TOUR
LONDON

THE
MAKING OF
Harry Potter



WBSTUDIOTOUR.CO.UK