



about **create** food and party design

We are one of London's most innovative and flexible special event caterers with over 20 years of experience.

We combine imaginative, delicious food with friendly, professional service and an unerring eye for detail.

OUR MANTRA

design

Look, ambiance, feel - call it what you will, we know that addressing the five senses is of paramount importance to create a successful and entertaining environment.

Our in-house designer focuses on the visual and sensory impact of every event to ensure it tastes, smells, feels, sounds and looks fantastic.

detail

The style of our exclusive glassware, the quality of the linen, the presentation of the food and the choice of canapé trays are indicative of our attention to every detail of every event.

We go out of our way to source from smaller producers and buy natural and organic food. Our style of food reflects the best in top restaurant catering served by enthusiastic, professional well-groomed staff.

delicious

Our imaginative menus are well presented, carefully sourced, full of flavours and based on sound traditional kitchen practises, making our food, real food.

Our cocktail and wine lists are conspicuous in their attention to flavour, source and value.

destination

Entertaining is not a question of how and when, but also where?

Museums, stately homes, marquees, offices or your home. We are experienced in providing the highest quality service in any location and are approved caterers at over 50 prestigious and unique venues in London and the UK.

delivery

We love the theatricality of having to get it right the first time.

We take the time to listen closely, both to what is said and to what is not said, enabling us to bring together all that is necessary to match the spirit of the occasion and to deliver an enjoyable and stress free event.

This is our dedication to you.





OUR TEAM

When planning your event, you want to engage with someone who is empathetic, sensitive, realistic, confident, experienced and as excited about your own party as you are.

Our party **creators** are chosen for their engaging personalities and passion for producing excellent events. Our dedicated operations team have unrivalled experience in delivering high-class events in special locations and we pride ourselves on delicious food served with exemplary service.

FOOD ETHOS

We produce any style of menu from canapé receptions, 'pot' food menus for conferences and parties, formal dinners in the City and parties in venues and temporary structures for up to 5,000 guests. The common thread between all of these diverse events is the quality and imagination of our menus.

All items prepared by **create** for clients are made from raw ingredients by our dedicated team of chefs in our custom built kitchen premises in Wimbledon. **create** have been operating this style of catering delivery for over 20 years, successfully servicing approximately 250 events per year.

All fresh and dry produce is sourced from reputable nominated and where possible local suppliers, and we use fair-trade and organic produce when possible. We regularly carry out spot checks on suppliers and ensure that all our suppliers are fully aware of their own responsibilities with regard to food handling and sustainability.



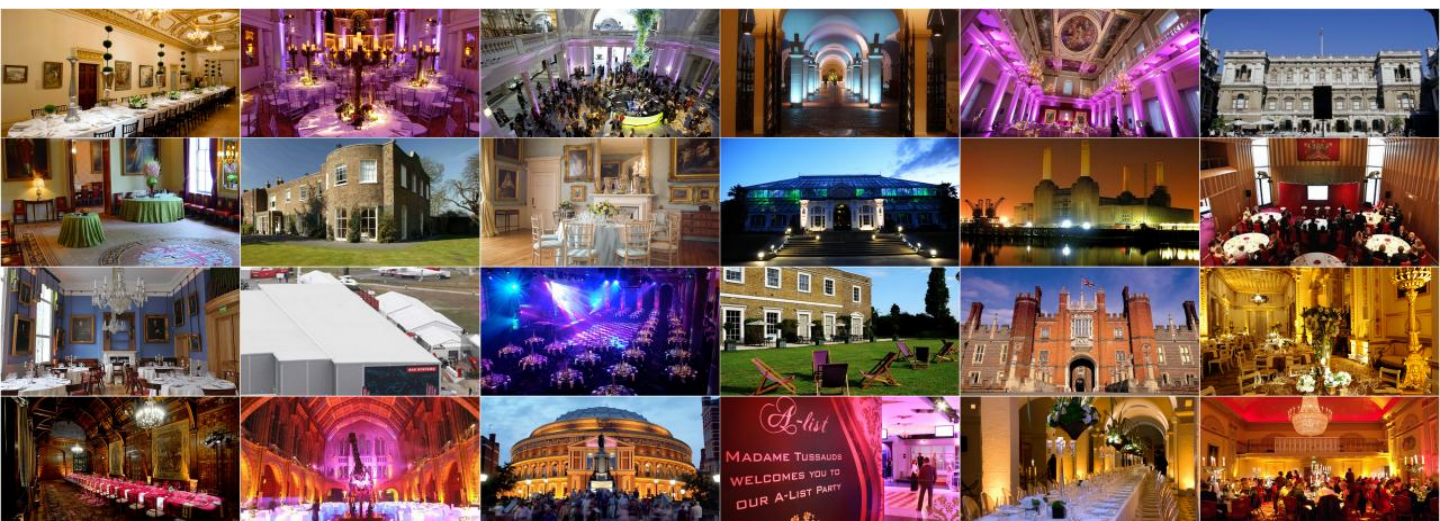


create food and party design venues

45 Millbank
 Banqueting House
 Battersea Power Station
 Burlington Gardens
 Christchurch Spitalfields
 Delfina
 Eltham Palace, Eng Heritage
 Farnborough (Five)
 Foundling Museum
 Freemasons' Hall
 Getty Images Gallery
 Glaziers Hall
 Grove House
 Guildhall
 HM Tower of London
 Il Bottaccio
 Imperial War Museum
 Kent House
 Kenwood House, Eng Heritage
 Kew Cambridge Cottage
 Kew House Orangery
 Kew Temperate House

Lancaster House
 Saatchi Gallery
 Salters' Hall **(Sole)**
 LSO St Lukes
 Museum of London Docklands
 Museum of London
 Museum of the Order of St John
 National Portrait Gallery
 Natural History Museum
 Old Billingsgate
 One Marylebone Road
 One Mayfair
 Osterley Park National Trust
 OXO2
 Parkstead House
 Pavilion at The Tower of London
 Plaisterers' Hall **(Sole)**
 Plumpton Pavilion
 Rangers House, Eng Heritage
 Roundhouse
 Royal Academy of Arts

Royal Albert Hall
 Royal Horticultural Halls
 Royal Hospital Chelsea
 Science Museum
 St Paul's
 Stationers Hall
 Syon House & Conservatory
 The Artillery Garden at the HAC
 The Bloomsbury Ballroom
 The Garden Room in Syon Park
 The Household Cavalry Museum
 The Supreme Court of the UK
 The London Library
 Trinity House
 Troxy
 Truman Brewery
 Two Temple Place
 Victoria & Albert Museum
 Village Underground
 Wallace Collection
 Wellington Arch, English Heritage
 Westminster Abbey Gardens
 Wrotham Park



FEEDBACK



"I write on behalf of the Commandant General Royal Marines to express our warmest gratitude for the simply outstanding service **create** provided for the Corps Reception at Lancaster House...the best reception involving The Corps in my memory."

The Royal Marines



"The food and service was excellent. Thank you so much for all of your hard work and enthusiasm - it really was a pleasure to be working with such professionals."

Virgin Atlantic



"Thank you for helping to ensure last night went so very well. The food and drinks flowed perfectly and all comments have been very positive!"

Credit Suisse



"I just wanted to thank you for helping us create such a polished, classy event. Your staff were prompt and professional, and the food was absolutely delicious."

New Energy Finance



"From the first site visit until the party, your work rate and support was first class, I cannot praise you enough for everything you put into our event. I would also like to touch on how superb and professional all the **create** staff were on the day."

Thames River Capital



"Many of our guests commented on how much they enjoyed the food. We have loved working with you and greatly appreciate the care that you have taken with our event."

Chanel



"The overwhelming feedback from guests, trustees and staff was that the event was a great success, some of the trustees even said our best gala event to date (and that is praise coming from them!) The food was wonderful and all of the waiting staff superb and this really made a big impact on the overall success of the evening."

London Philharmonic Orchestra



"Can I thank you so much for helping make Saturday night such a success. I was completely bowled over by the food and service and by the sounds of things all our guests had such a wonderful time and most importantly we raised more for Help for Heroes than we ever imagined."

Help for Heroes



"Please pass my sincere thanks to your team for such a wonderful party. I have received nothing but praise from everyone and most of this is due to the professionalism of your team on the night. The food was fantastic."

The Football Association

create food and party design

t 020 8944 4900

f 020 8944 4901

e info@createfood.co.uk

24 endeavour way, london, sw19 8uh